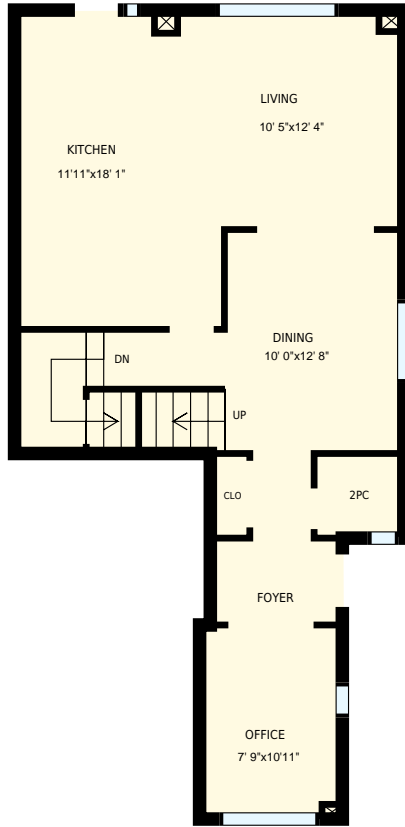


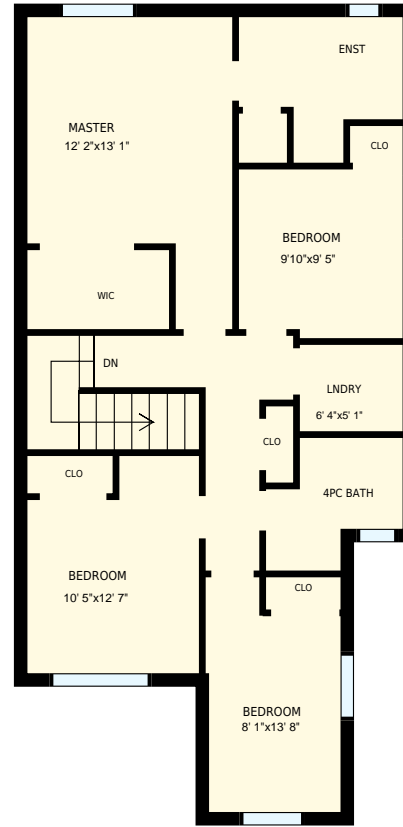


124 Aylesbury Dr, Brampton, ON

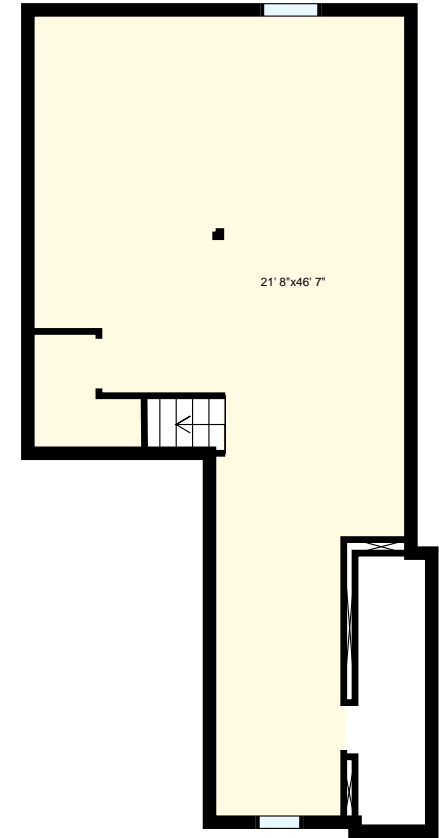
Total Exterior Area Above Grade 1893 sq. ft.



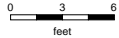
Main floor
Exterior Area 870 sq. ft.

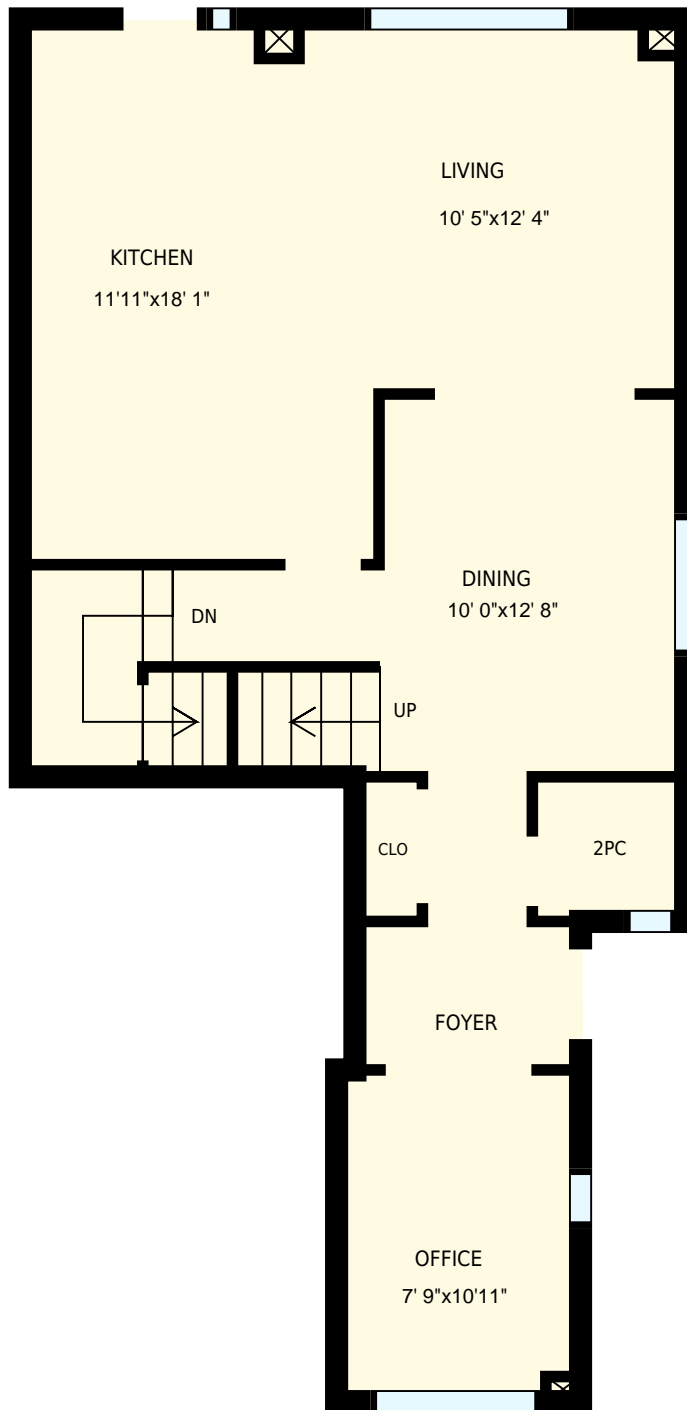


2nd floor
Exterior Area 1023 sq. ft.



Basement






124 Aylesbury Dr, Brampton, ON

PREPARED FOR:
Karla Saa
Sales Representative
RE/MAX West Realty Inc., Brokerage

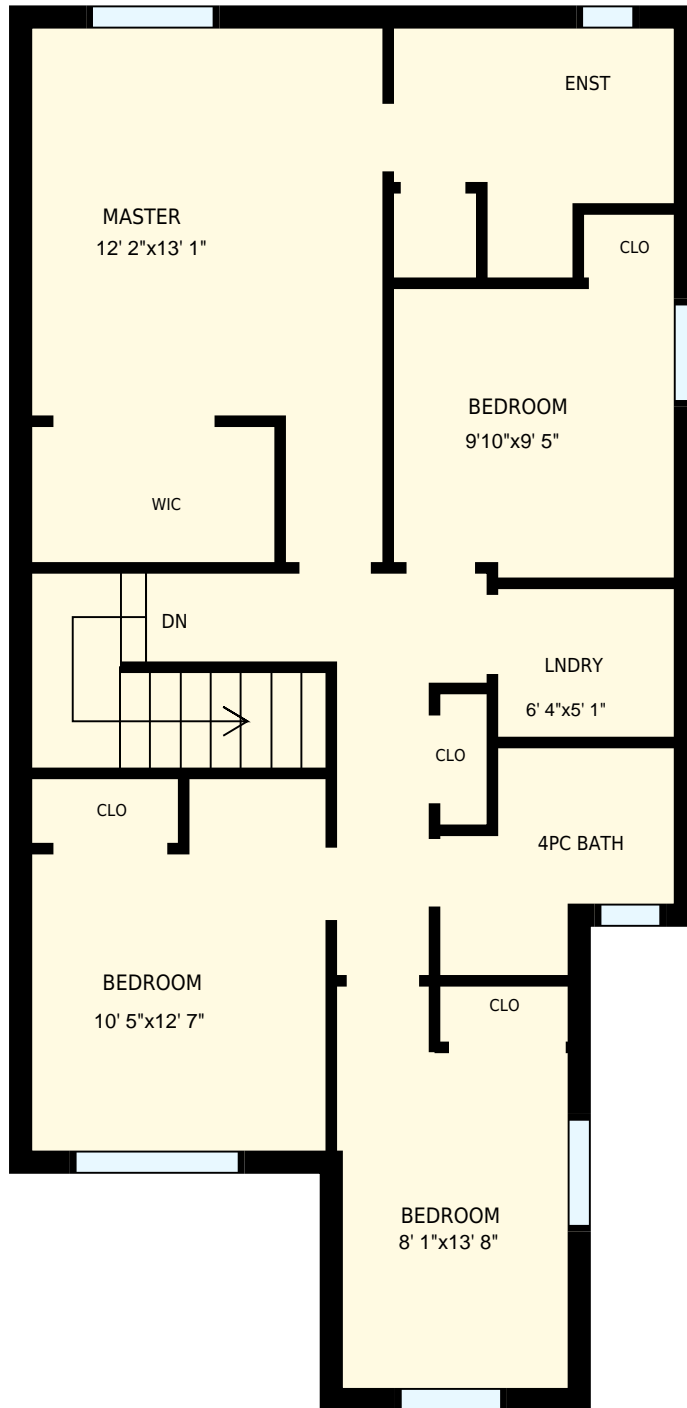
Main floor

Interior Area 747 sq. ft.
Exterior Area 870 sq. ft.

 Included Area

PREPARED ON:
May, 2017

All room dimensions and floor areas must be considered approximate and are subject to independent verification.
For method of measurement please see <https://youriguide.com/measure/>.



124 Aylesbury Dr, Brampton, ON

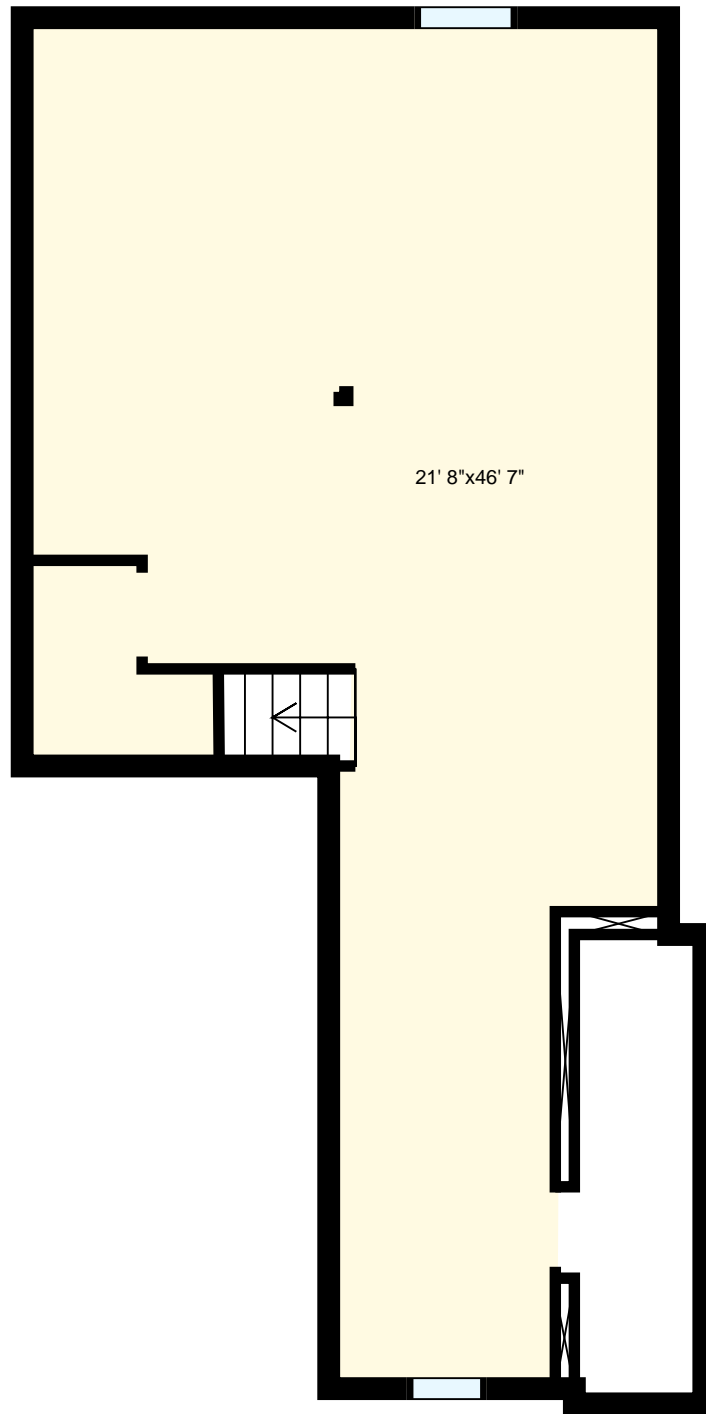
PREPARED FOR:
 Karla Saa
 Sales Representative
 RE/MAX West Realty Inc., Brokerage

2nd floor

Interior Area 900 sq. ft.
 Exterior Area 1023 sq. ft. Included Area

PREPARED ON:
 May, 2017

All room dimensions and floor areas must be considered approximate and are subject to independent verification.
 For method of measurement please see <https://youriguide.com/measure/>.

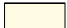


124 Aylesbury Dr, Brampton, ON

PREPARED FOR:
Karla Saa
Sales Representative
RE/MAX West Realty Inc., Brokerage

Basement

Interior Area 729 sq. ft.
Exterior Area

 Included Area

PREPARED ON:
May, 2017

All room dimensions and floor areas must be considered approximate and are subject to independent verification.
For method of measurement please see <https://youriguide.com/measure/>.