



Southampton 4

2416 sq ft + 91 sq ft "open to below"



Our Commitment to Quality

Trevalli Homes is dedicated to providing superior-quality comfortable homes that focus on innovative design, excellence in workmanship and customer satisfaction - beyond expectations.

Built on strong family values, Trevalli builds your home as if it were our own. We take great pride in our uncompromising attention to customer service, workmanship and design. Trevalli doesn't just build homes, we enhance lifestyles - turning your dreams into reality. Whatever your lifestyle needs - the choice is yours with Trevalli.

519-515-0454

www.trevallihomes.com

PO Box #21009, 35 Harvard Road, Guelph, ON N1G 3A0

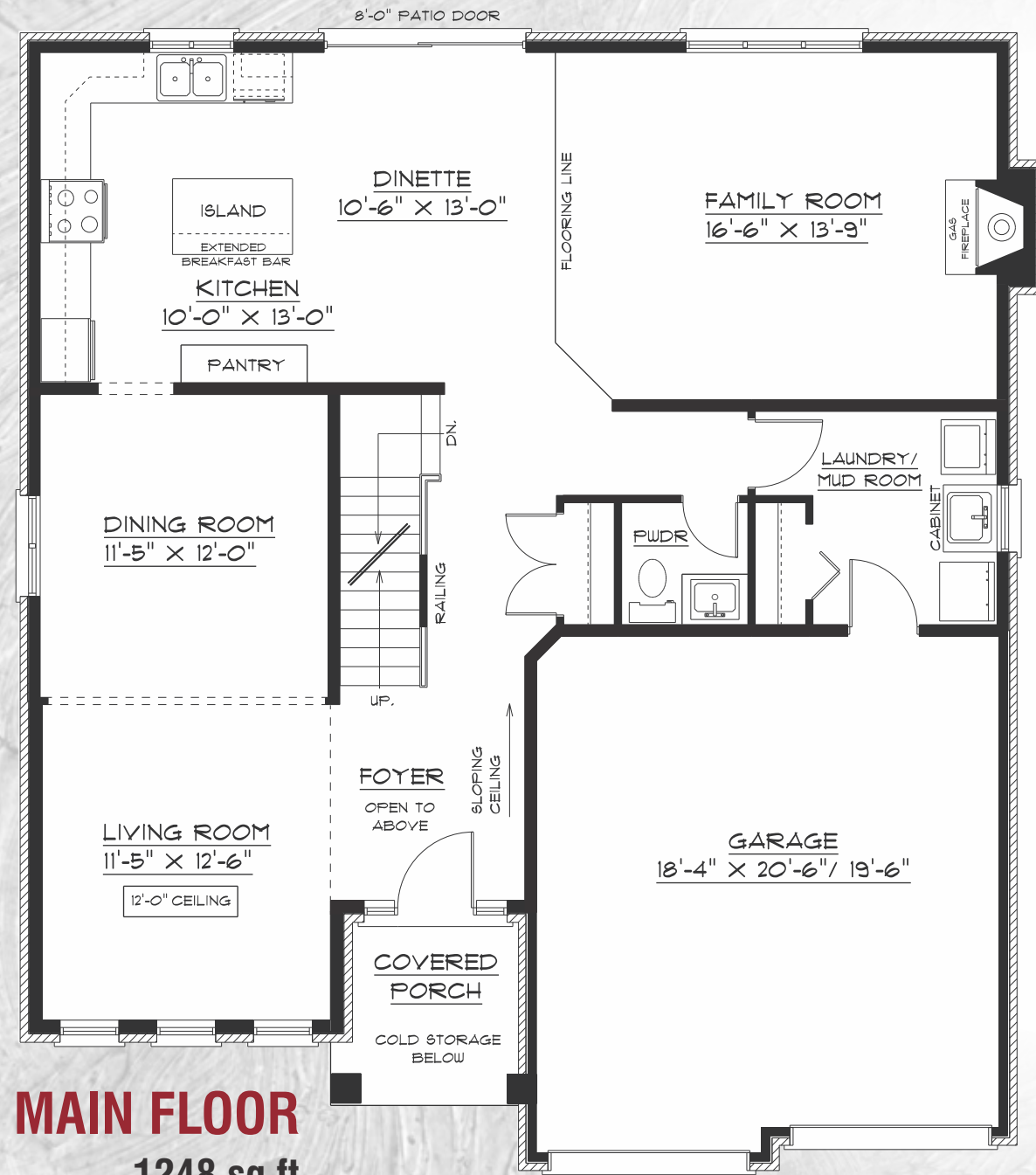


Built BY CRAFTSMEN
DESIGNED FOR YOUR *Lifestyle*

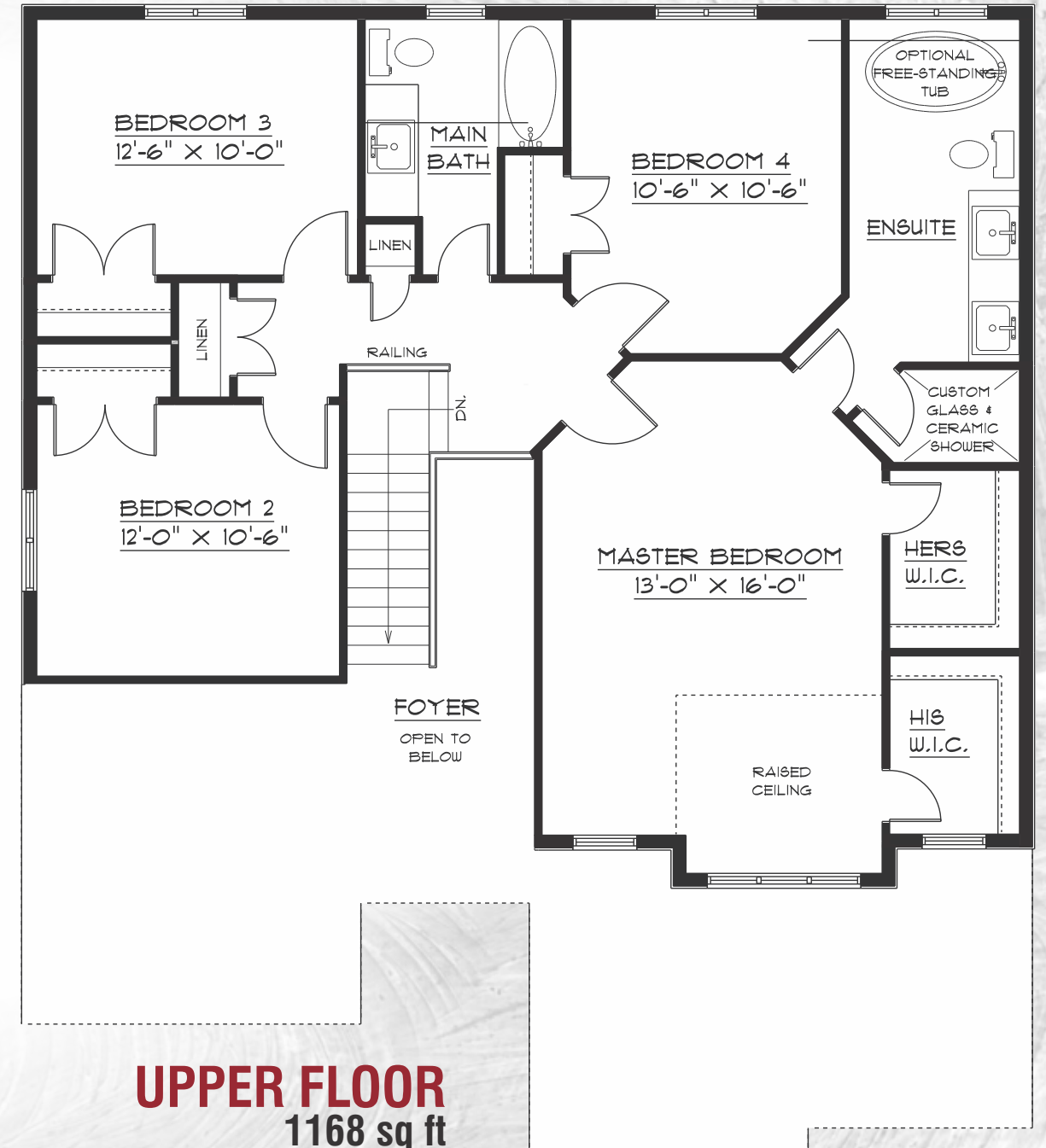


Southampton 4

2416 sq ft
(Plus 91 Sq. Ft. of "open to below")



MAIN FLOOR
1248 sq ft



UPPER FLOOR
1168 sq ft
(Plus 91 Sq. Ft. of "open to below")

*Houses Shown With Premium Features

The Choice is yours with





Trenton 2
2645 sq ft + 104 sq ft :open to below"



Our Commitment to Quality

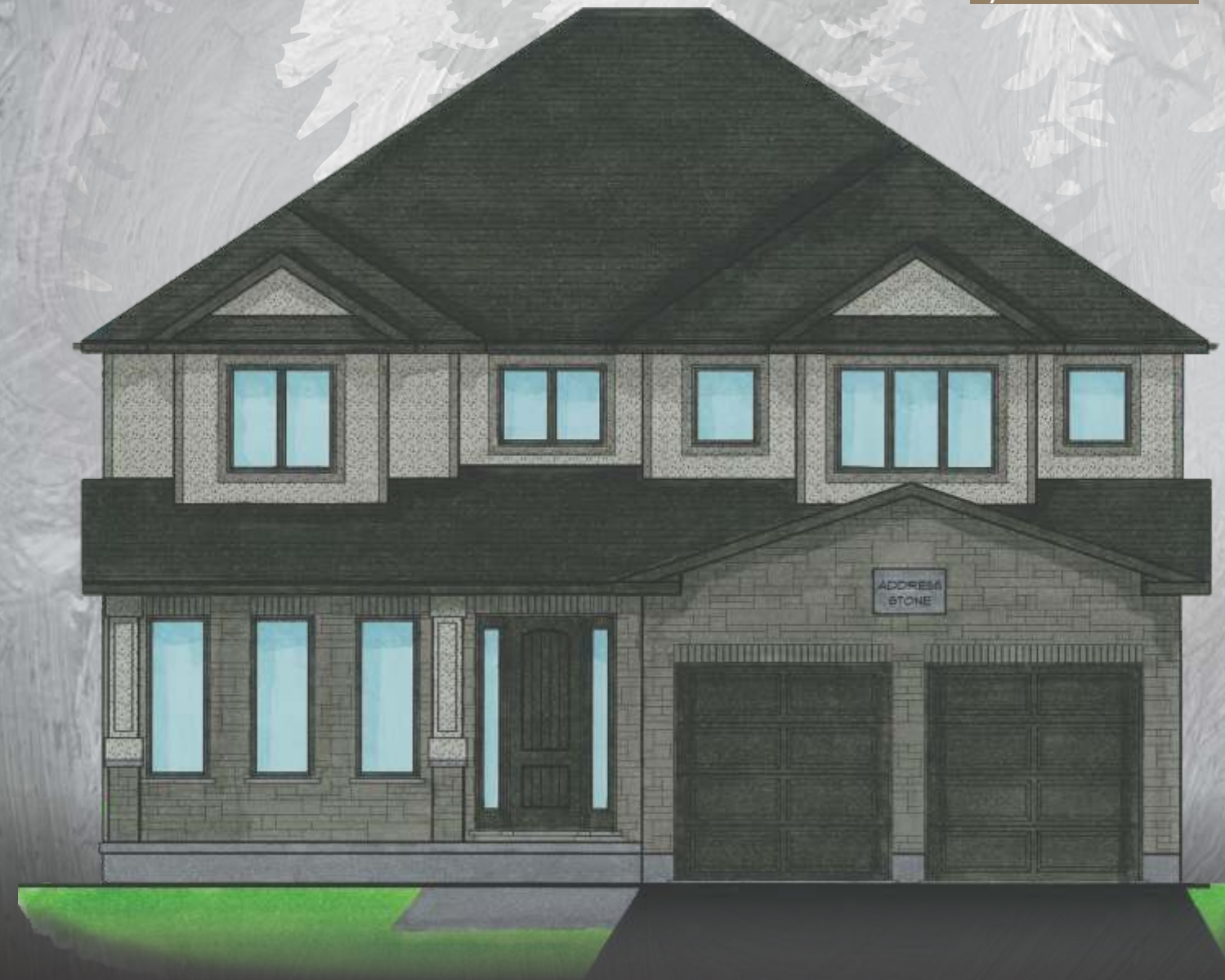
Trevalli Homes is dedicated to providing superior-quality comfortable homes that focus on innovative design, excellence in workmanship and customer satisfaction - beyond expectations.

Built on strong family values, Trevalli builds your home as if it were our own. We take great pride in our uncompromising attention to customer service, workmanship and design. Trevalli doesn't just build homes, we enhance lifestyles - turning your dreams into reality. Whatever your lifestyle needs - the choice is yours with Trevalli.

519-515-0454

www.trevallihomes.com

PO Box #21009, 35 Harvard Road, Guelph, ON N1G 3A0

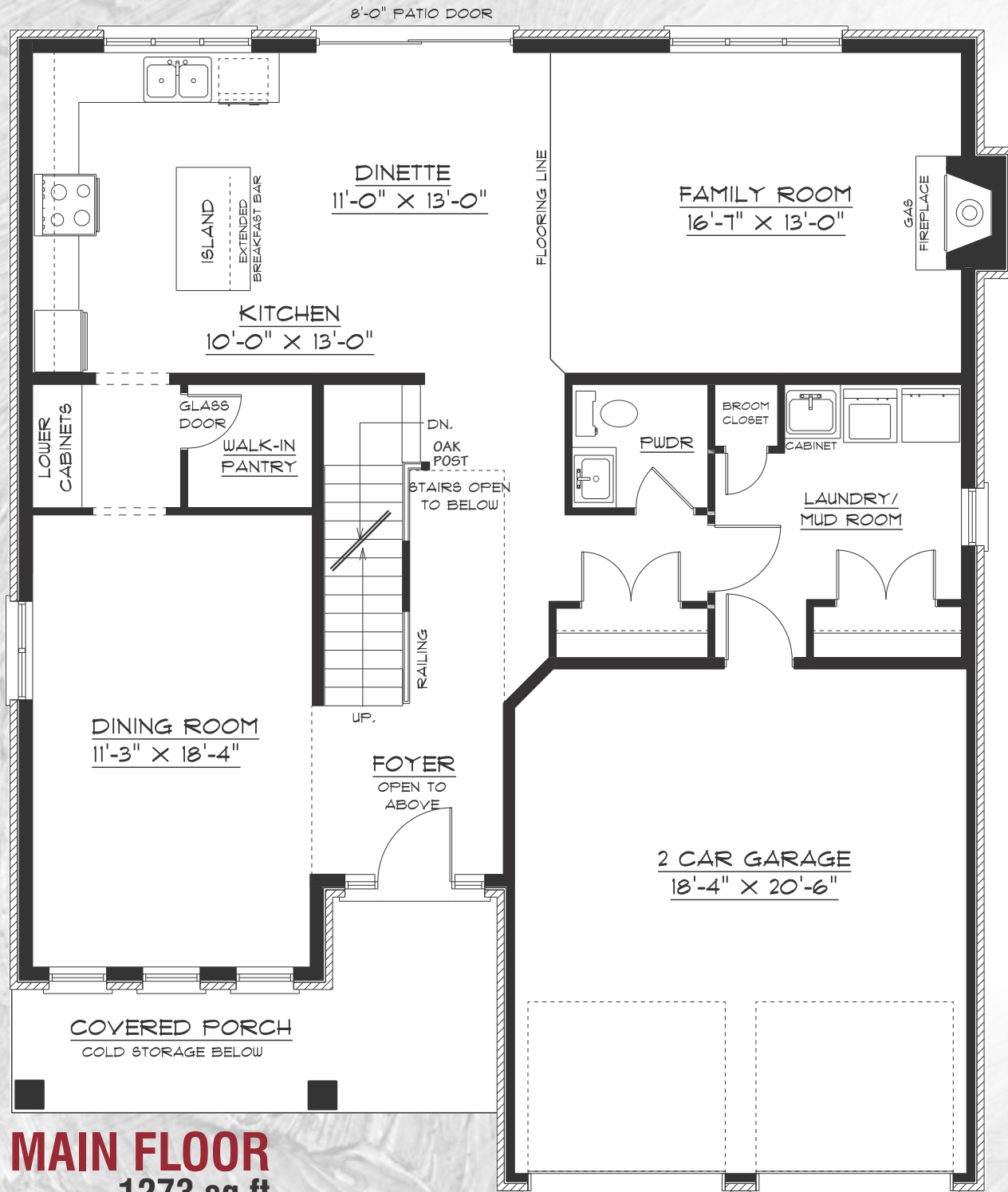


Built BY CRAFTSMEN
DESIGNED FOR YOUR *Lifestyle*

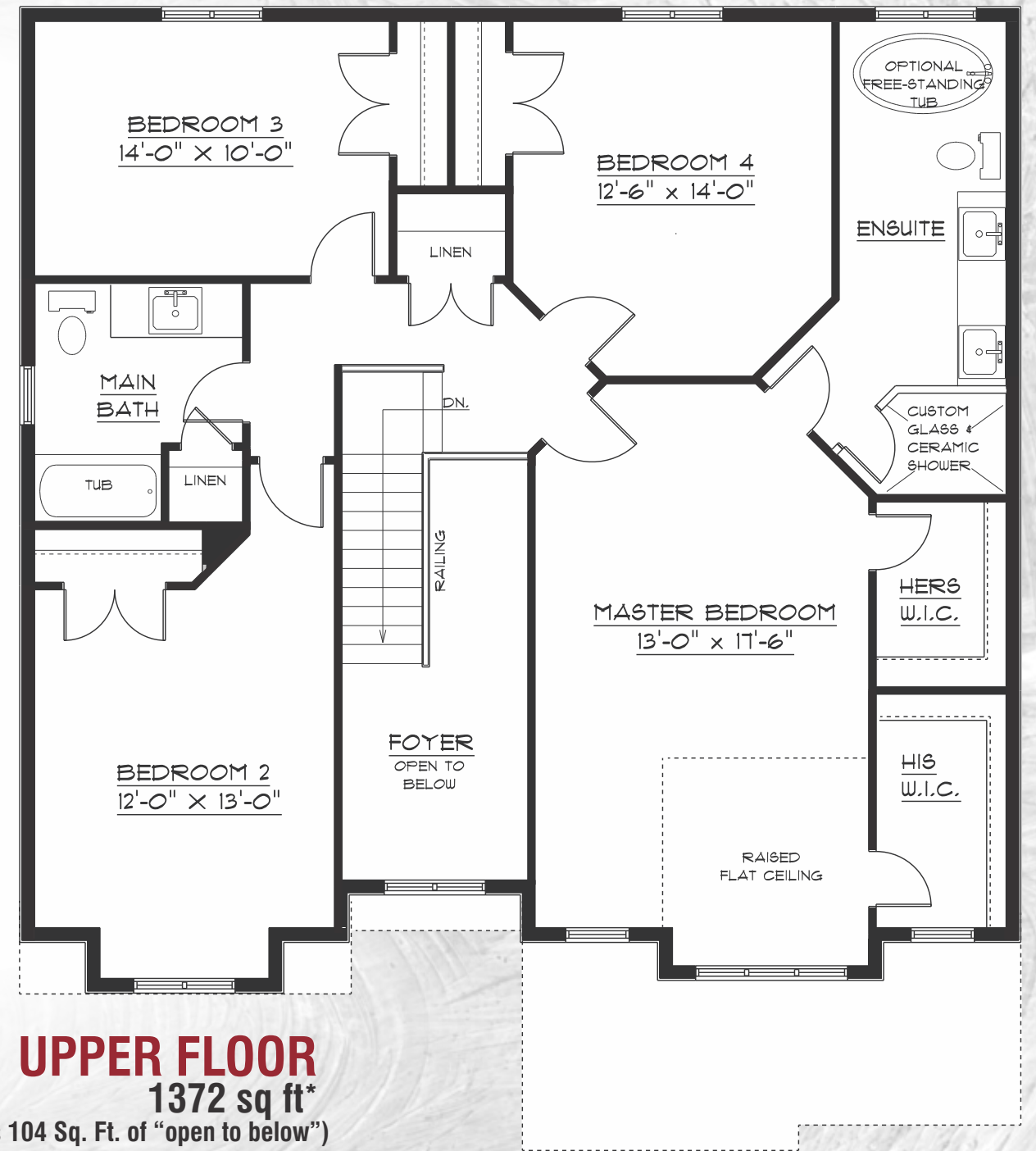


Trenton 2

2645 sq ft
(Plus 104 Sq. Ft. of "open to below")



MAIN FLOOR
1273 sq ft



UPPER FLOOR
1372 sq ft*
(Plus 104 Sq. Ft. of "open to below")

*Houses Shown With Premium Features

The Choice is yours with





Whetstone 3

2680 sq ft + 58 sq ft "open to below"



Our Commitment to Quality

Trevalli Homes is dedicated to providing superior-quality comfortable homes that focus on innovative design, excellence in workmanship and customer satisfaction - beyond expectations.

Built on strong family values, Trevalli builds your home as if it were our own. We take great pride in our uncompromising attention to customer service, workmanship and design. Trevalli doesn't just build homes, we enhance lifestyles - turning your dreams into reality. Whatever your lifestyle needs - the choice is yours with Trevalli.

519-515-0454

www.trevallihomes.com

PO Box #21009, 35 Harvard Road, Guelph, ON N1G 3A0

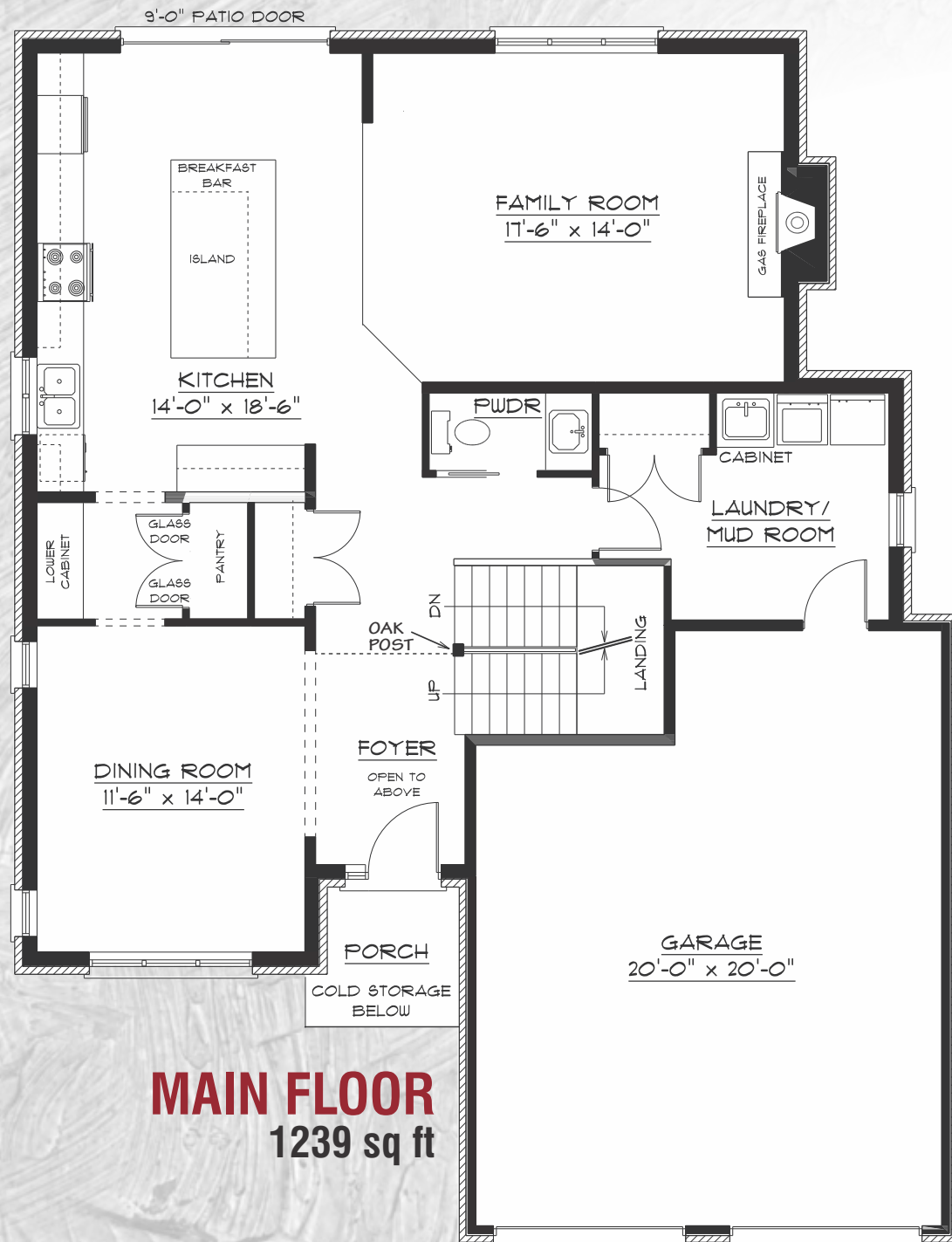


Built BY CRAFTSMEN
DESIGNED FOR YOUR *Lifestyle*

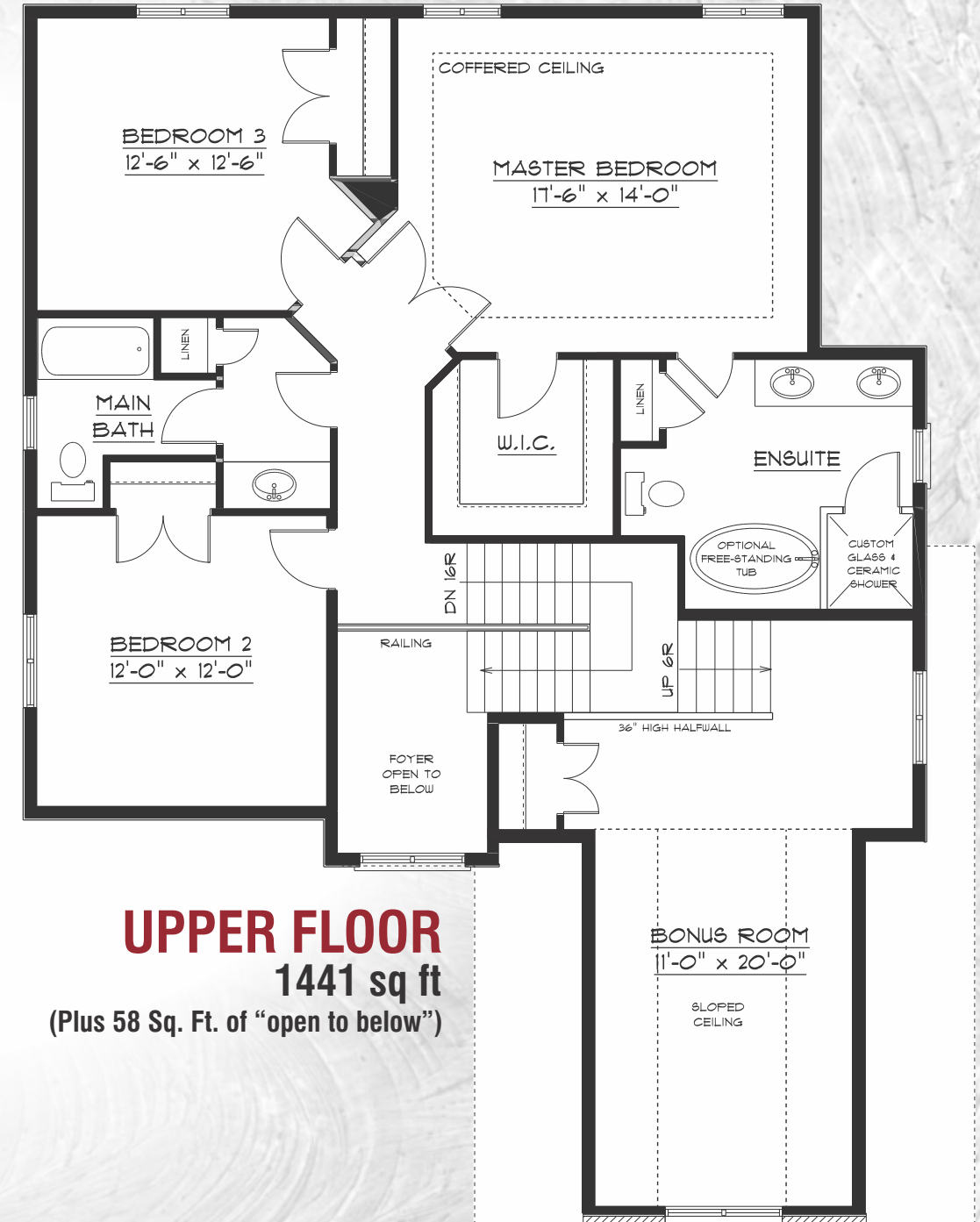


Whetstone 3

2680 sq ft
(Plus 58 Sq. Ft. of "open to below")



MAIN FLOOR
1239 sq ft



UPPER FLOOR
1441 sq ft
(Plus 58 Sq. Ft. of "open to below")

*Houses Shown With Premium Features

The Choice is yours with





Whetstone 4

2781 sq ft + 41 sq ft "open to below"



Our Commitment to Quality

Trevalli Homes is dedicated to providing superior-quality comfortable homes that focus on innovative design, excellence in workmanship and customer satisfaction - beyond expectations.

Built on strong family values, Trevalli builds your home as if it were our own. We take great pride in our uncompromising attention to customer service, workmanship and design. Trevalli doesn't just build homes, we enhance lifestyles - turning your dreams into reality. Whatever your lifestyle needs - the choice is yours with Trevalli.

519-515-0454

www.trevallihomes.com

PO Box #21009, 35 Harvard Road, Guelph, ON N1G 3A0

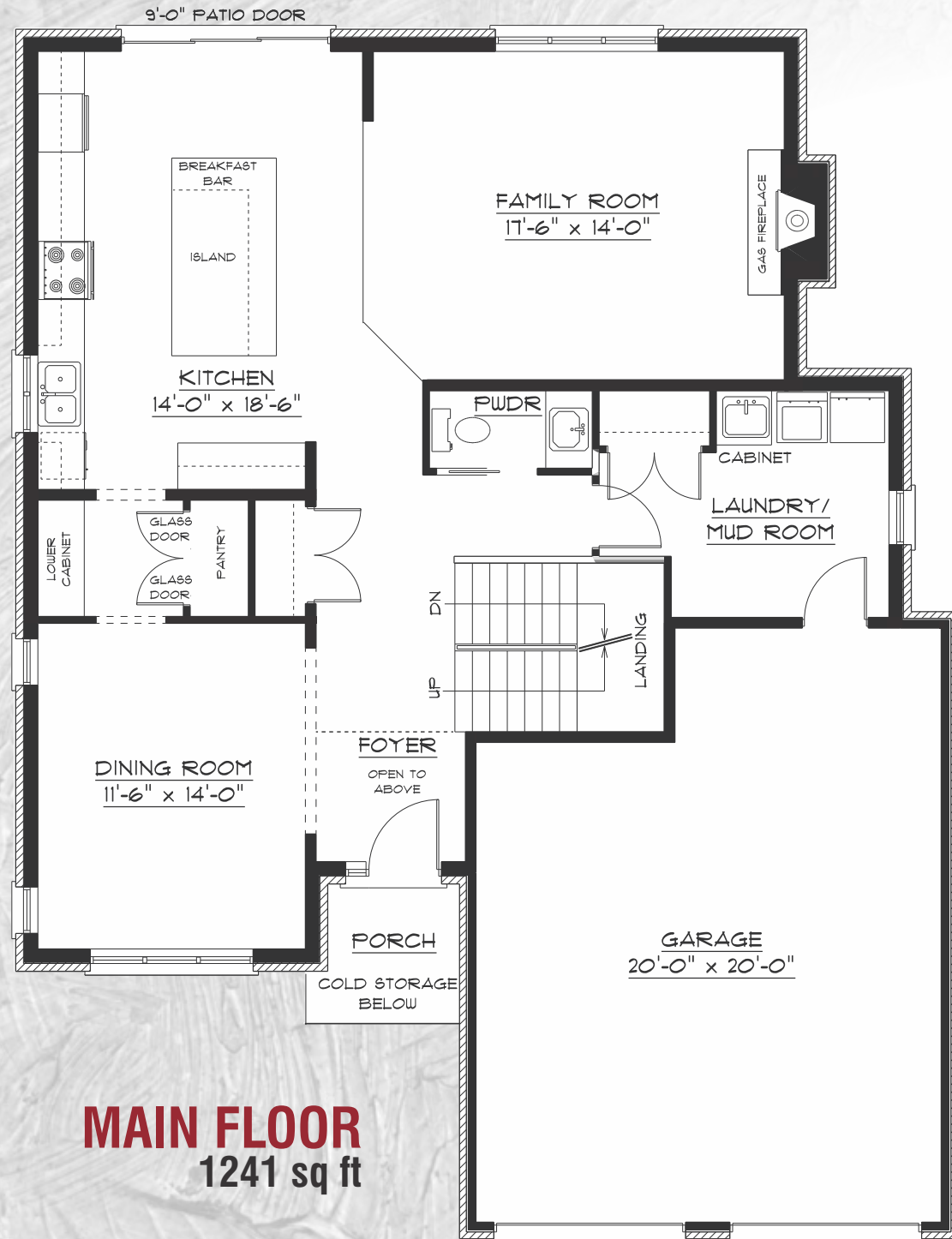


Built BY CRAFTSMEN
DESIGNED FOR YOUR *Lifestyle*

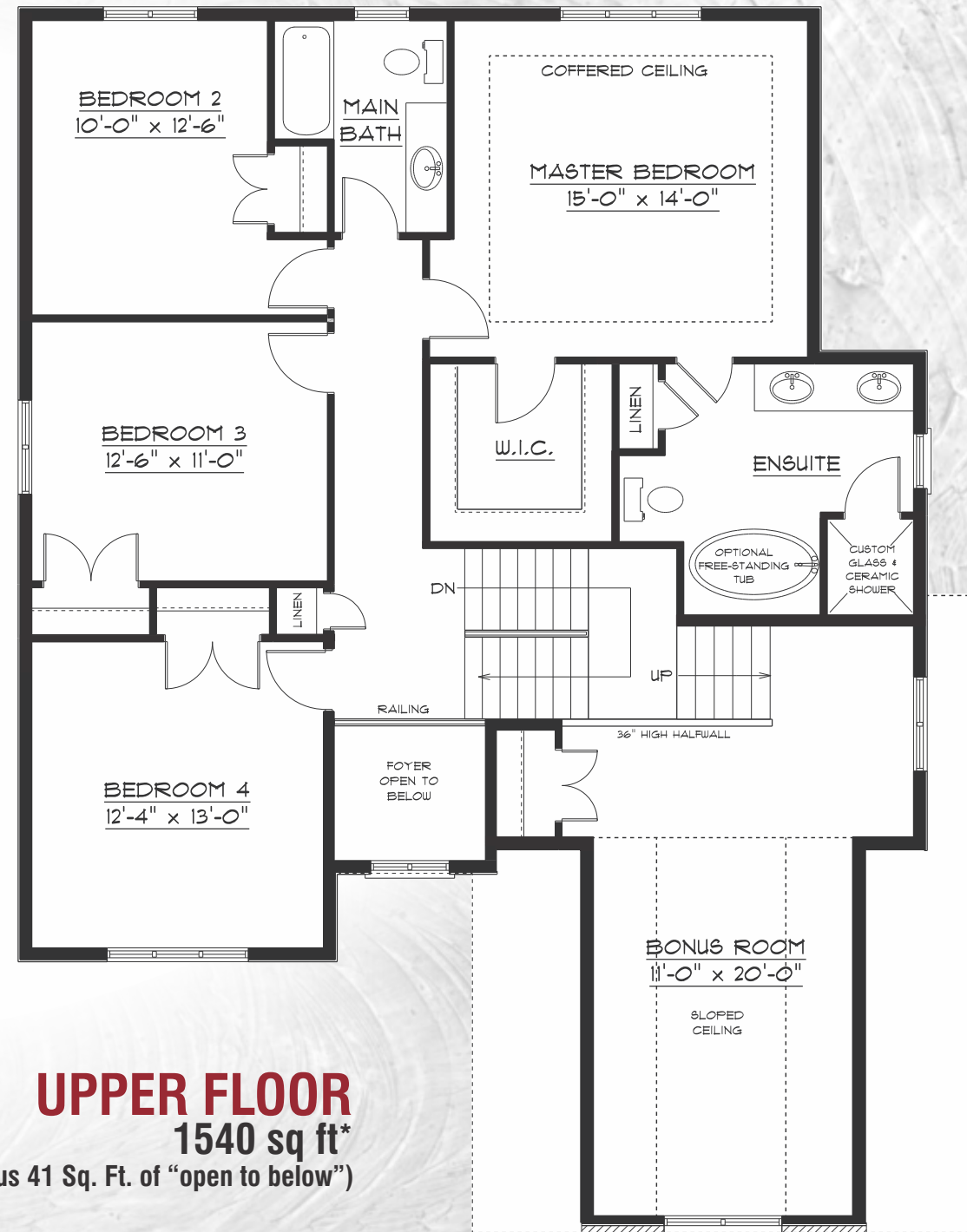


Whetstone 4

2781 sq ft
(Plus 41 Sq. Ft. of "open to below")



MAIN FLOOR
1241 sq ft



UPPER FLOOR
1540 sq ft*
(Plus 41 Sq. Ft. of "open to below")

*Houses Shown With Premium Features

The Choice is yours with





Kingsbridge

2850 sq ft + 230 sq ft "open to below"



Our Commitment to Quality

Trevalli Homes is dedicated to providing superior-quality comfortable homes that focus on innovative design, excellence in workmanship and customer satisfaction - beyond expectations.

Built on strong family values, Trevalli builds your home as if it were our own. We take great pride in our uncompromising attention to customer service, workmanship and design. Trevalli doesn't just build homes, we enhance lifestyles - turning your dreams into reality. Whatever your lifestyle needs - the choice is yours with Trevalli.

519-515-0454

www.trevallihomes.com

PO Box #21009, 35 Harvard Road, Guelph, ON N1G 3A0

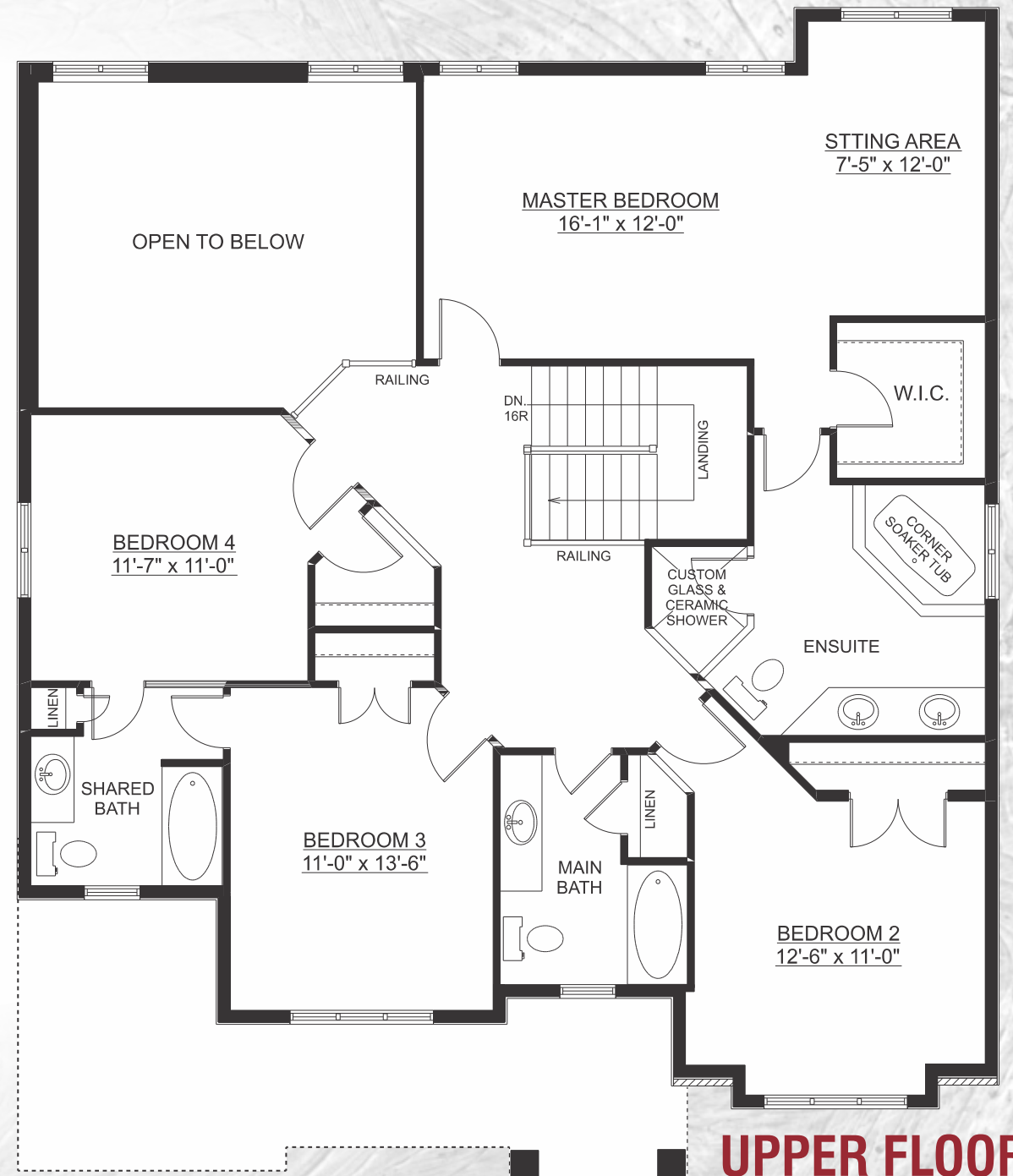
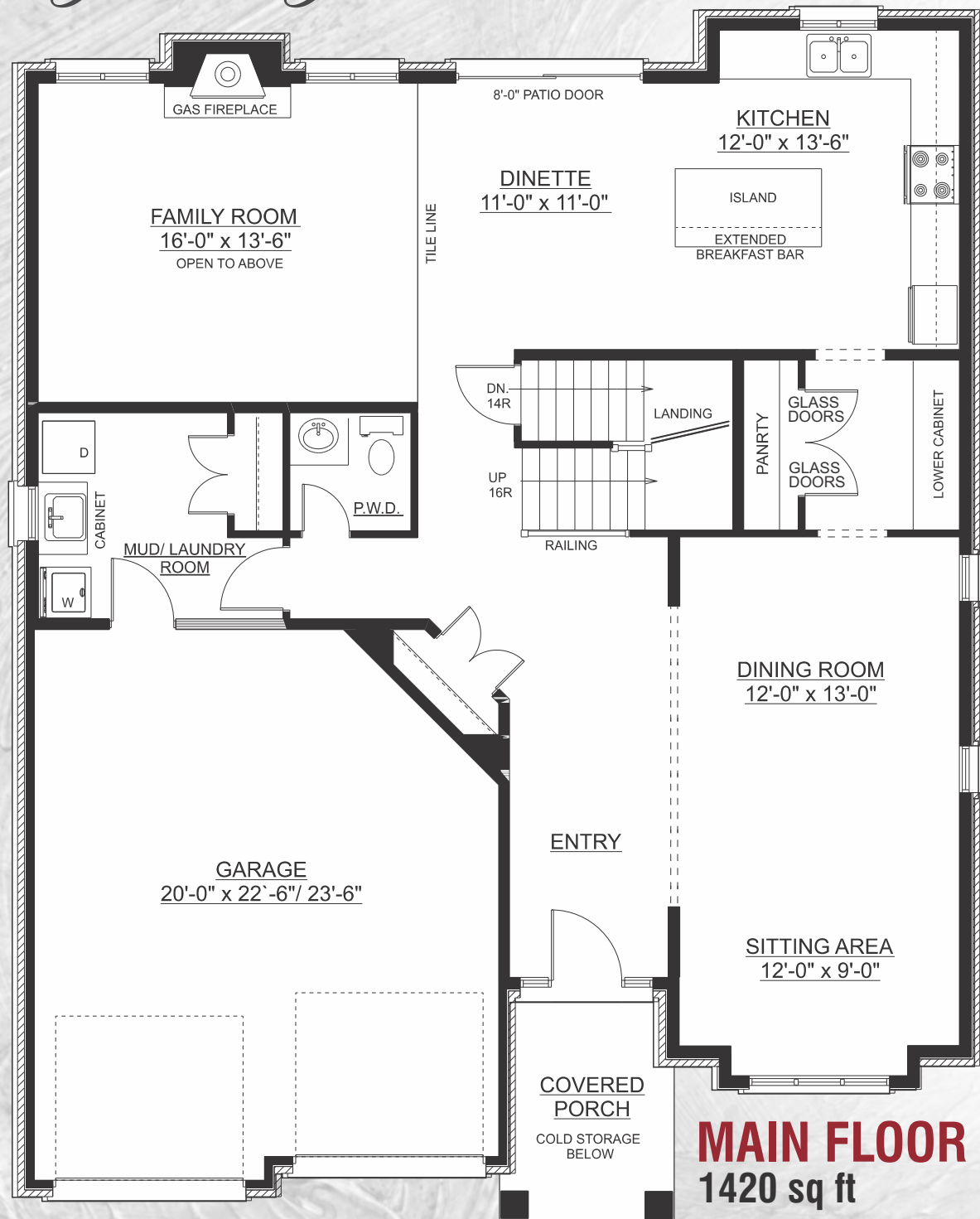


Built BY CRAFTSMEN
DESIGNED FOR YOUR *Lifestyle*



Kingsbridge

2850 sq ft
(Plus 230 Sq. Ft. of "open to below")



*Houses Shown With Premium Features

The Choice is yours with





Wolfond 2
2882 sq ft



Our Commitment to Quality

Trevalli Homes is dedicated to providing superior-quality comfortable homes that focus on innovative design, excellence in workmanship and customer satisfaction - beyond expectations.

Built on strong family values, Trevalli builds your home as if it were our own. We take great pride in our uncompromising attention to customer service, workmanship and design. Trevalli doesn't just build homes, we enhance lifestyles - turning your dreams into reality. Whatever your lifestyle needs - the choice is yours with Trevalli.

519-515-0454

www.trevallihomes.com

PO Box #21009, 35 Harvard Road, Guelph, ON N1G 3A0



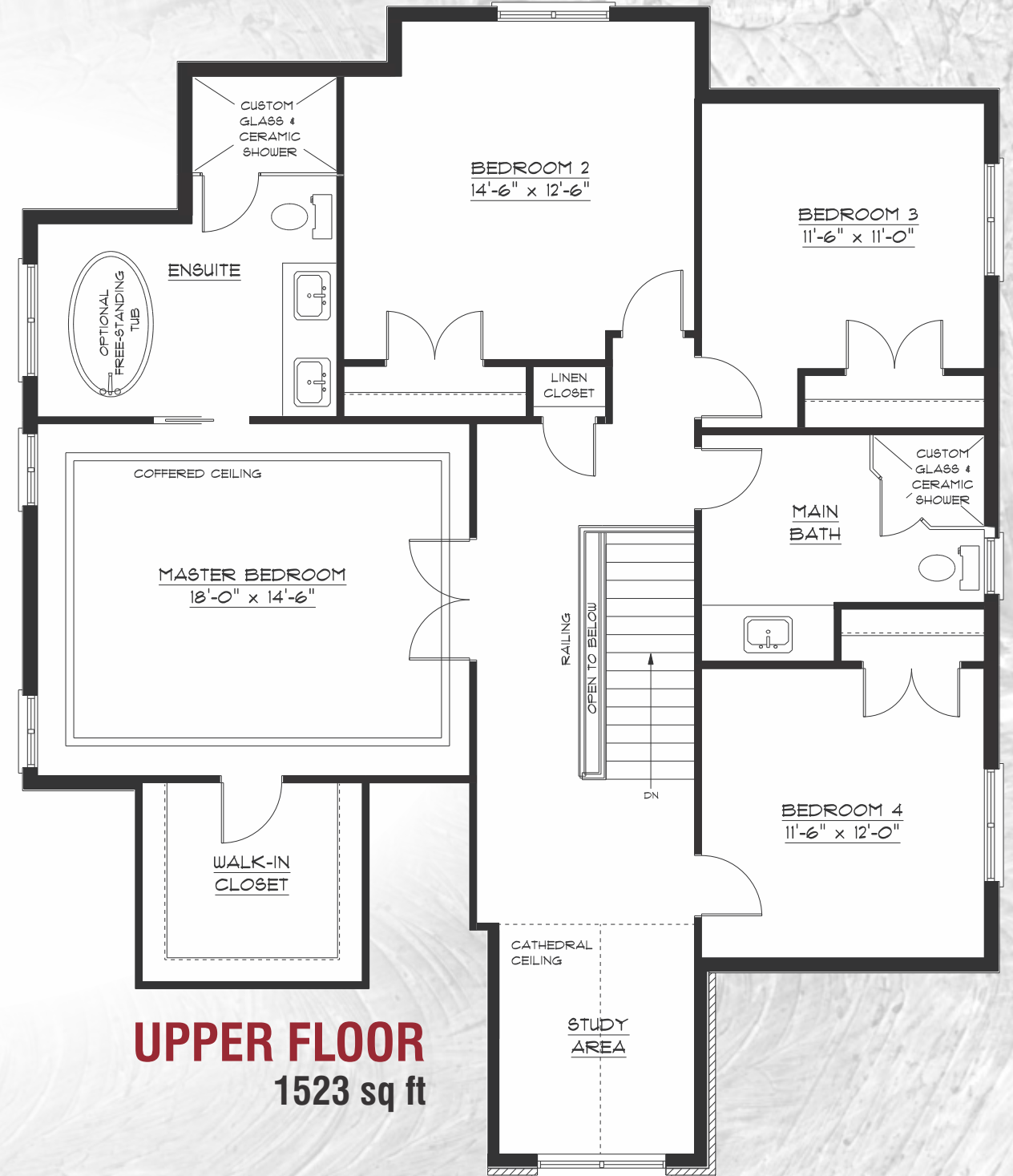
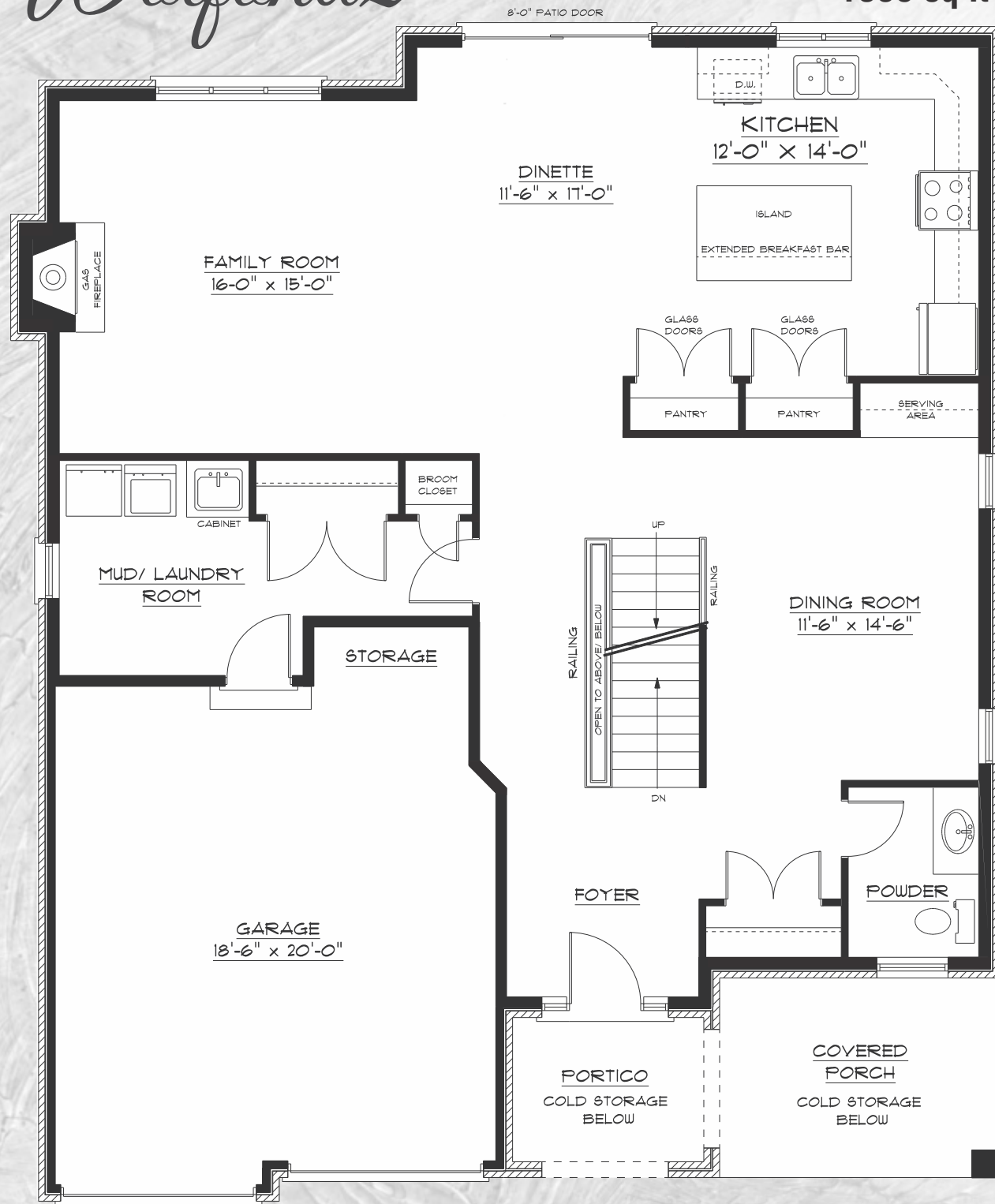
Built BY CRAFTSMEN
DESIGNED FOR YOUR *Lifestyle*



Wolfond 2

MAIN FLOOR
1359 sq ft

2882 sq ft



UPPER FLOOR
1523 sq ft

*Houses Shown With Premium Features

The Choice is yours with





Mansfield 2

3148 sq ft + 61 sq ft "open to below"



Our Commitment to Quality

Trevalli Homes is dedicated to providing superior-quality comfortable homes that focus on innovative design, excellence in workmanship and customer satisfaction - beyond expectations.

Built on strong family values, Trevalli builds your home as if it were our own. We take great pride in our uncompromising attention to customer service, workmanship and design. Trevalli doesn't just build homes, we enhance lifestyles - turning your dreams into reality. Whatever your lifestyle needs - the choice is yours with Trevalli.

519-515-0454

www.trevallihomes.com

PO Box #21009, 35 Harvard Road, Guelph, ON N1G 3A0

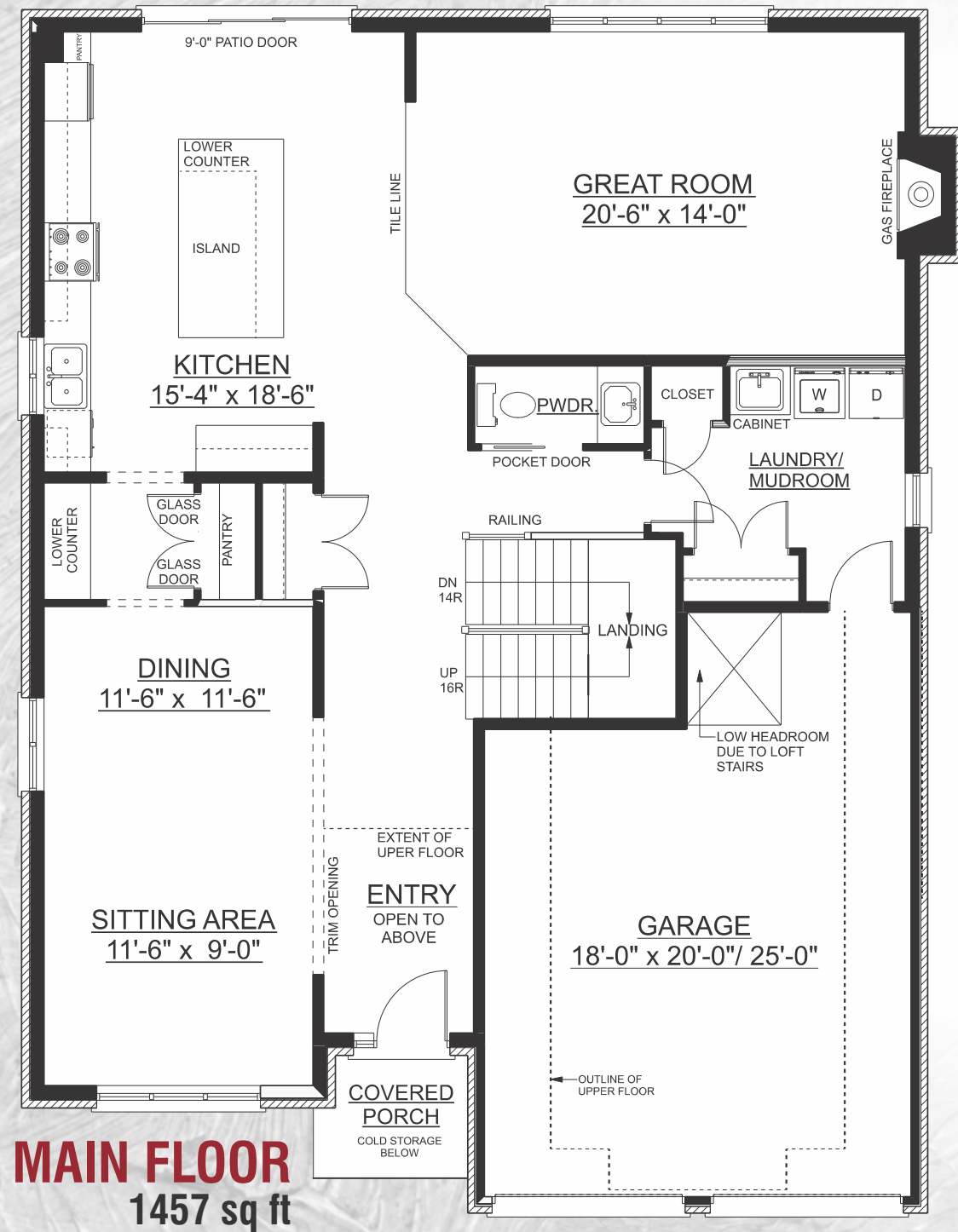


Built BY CRAFTSMEN
DESIGNED FOR YOUR *Lifestyle*



Mansfield 2

3148 sq ft
(Plus 61 Sq. Ft. of "open to below")



*Houses Shown With Premium Features

The Choice is yours with





Magnolia

3420 sq ft + 131 sq ft "open to below"



Our Commitment to Quality

Trevalli Homes is dedicated to providing superior-quality comfortable homes that focus on innovative design, excellence in workmanship and customer satisfaction - beyond expectations.

Built on strong family values, Trevalli builds your home as if it were our own. We take great pride in our uncompromising attention to customer service, workmanship and design. Trevalli doesn't just build homes, we enhance lifestyles - turning your dreams into reality. Whatever your lifestyle needs - the choice is yours with Trevalli.

519-515-0454

www.trevallihomes.com

PO Box #21009, 35 Harvard Road, Guelph, ON N1G 3A0

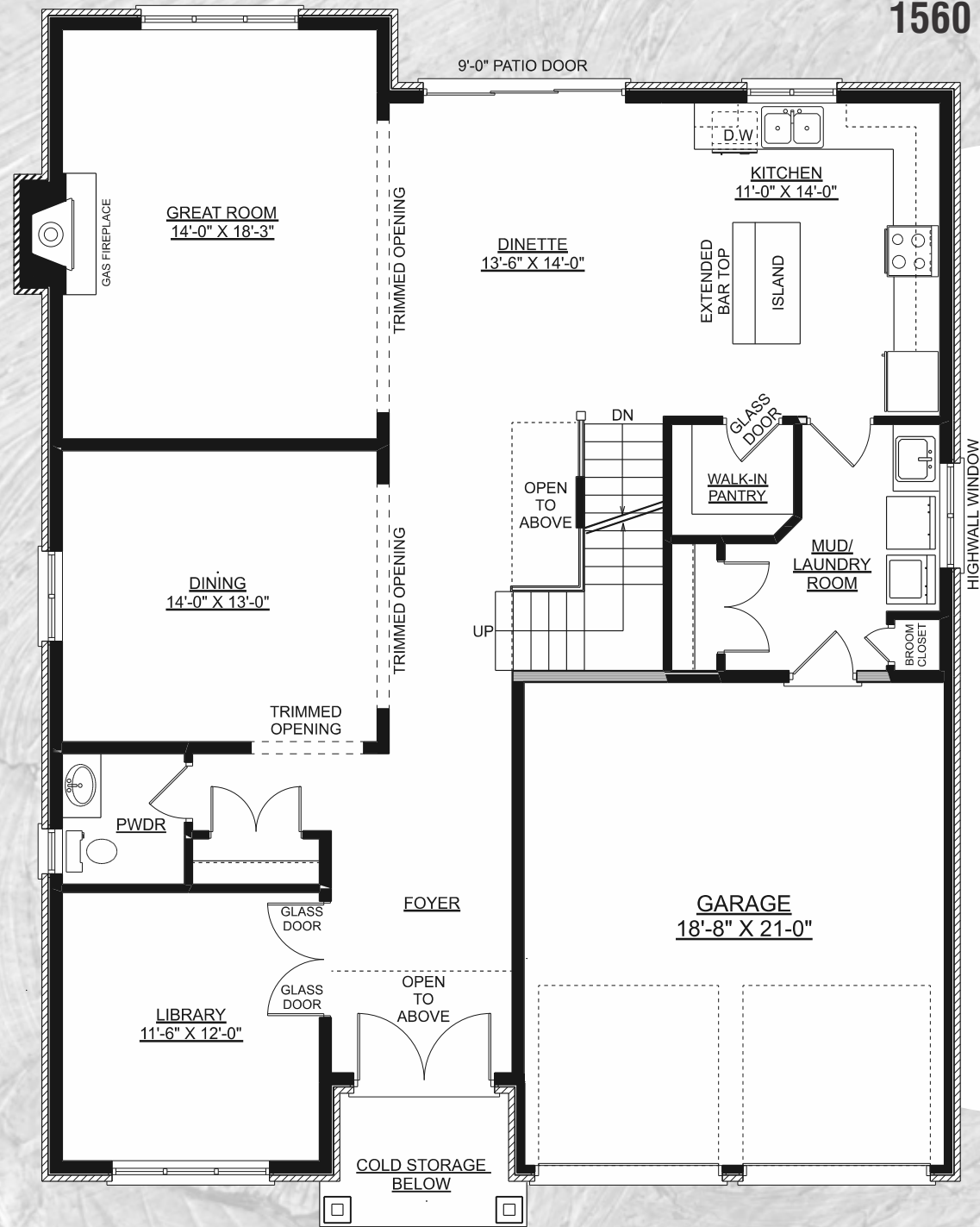


Built BY CRAFTSMEN
DESIGNED FOR YOUR *Lifestyle*

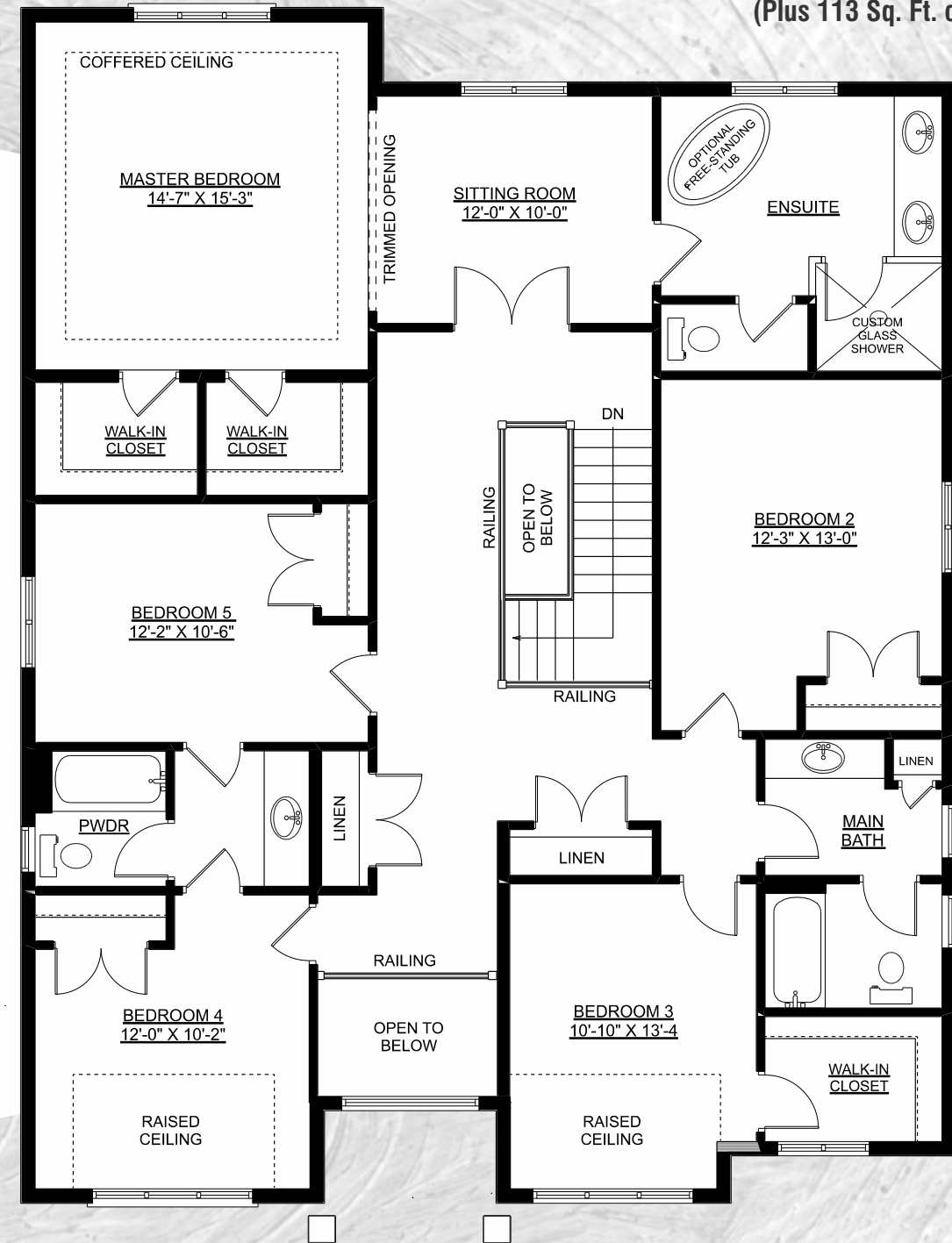


Magnolia

MAIN FLOOR 1560 sq ft



UPPER FLOOR 1860 sq ft (Plus 113 Sq. Ft. of "open to below")



*Houses Shown With Premium Features

The Choice is yours with

