



Laird

2853 sq ft + 395 sq ft "open to below"



Our Commitment to Quality

Trevalli Homes is dedicated to providing superior-quality comfortable homes that focus on innovative design, excellence in workmanship and customer satisfaction - beyond expectations.

Built on strong family values, Trevalli builds your home as if it were our own. We take great pride in our uncompromising attention to customer service, workmanship and design. Trevalli doesn't just build homes, we enhance lifestyles - turning your dreams into reality. Whatever your lifestyle needs - the choice is yours with Trevalli.



519-515-0454

www.trevallihomes.com

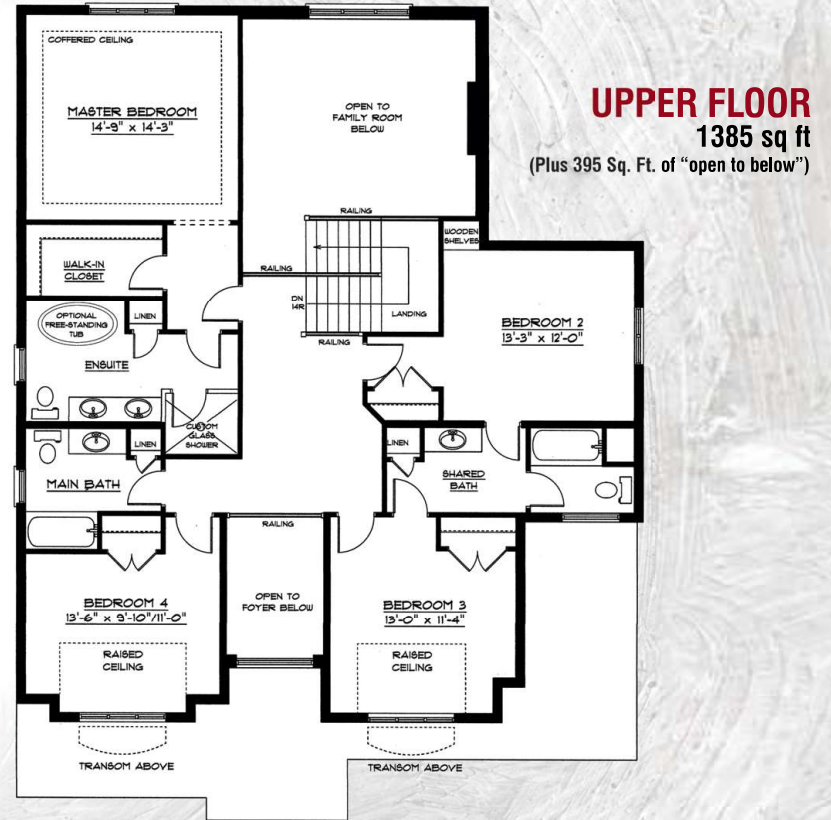
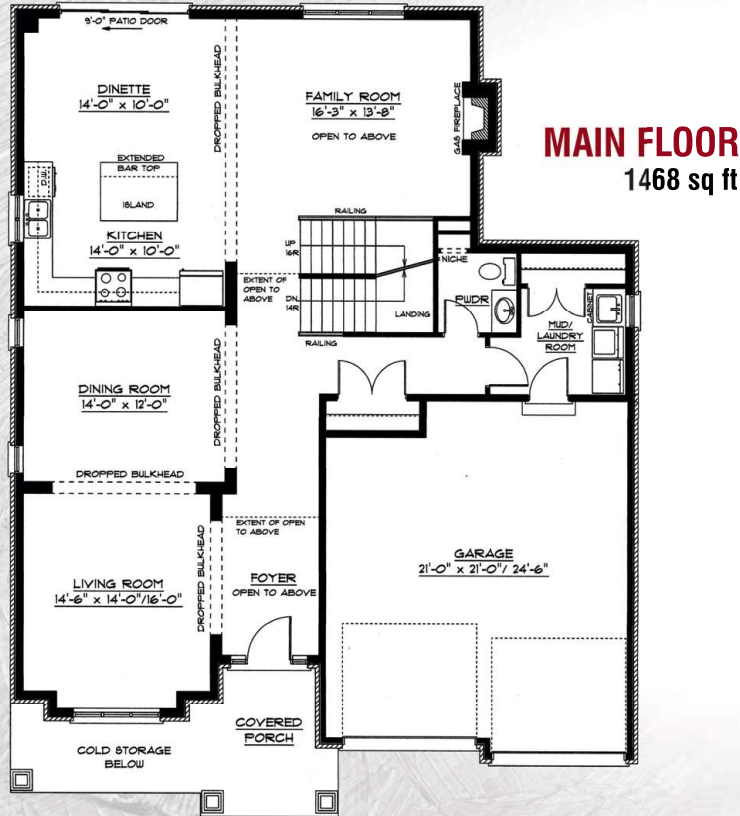
PO Box #21009, 35 Harvard Road, Guelph, ON N1G 3A0

Built BY CRAFTSMEN
DESIGNED FOR YOUR *Lifestyle*



Laird

2853 sq ft
(Plus 395 Sq. Ft. of "open to below")



*Houses Shown With Premium Features

The Choice is yours with



*Materials, specifications, and floor plans are subject to changes without notice. Plan may be built as the mirror image. All house renderings are artist's conceptions. All floor plans are approximate dimensions. Actual usable floor space may vary from the stated floor area. E, & O.E. © 2018 Trevalli Homes Limited.



Chartwell

2930 sq ft + 240 sq ft "open to below"



Our Commitment to Quality

Trevalli Homes is dedicated to providing superior-quality comfortable homes that focus on innovative design, excellence in workmanship and customer satisfaction - beyond expectations.

Built on strong family values, Trevalli builds your home as if it were our own.

We take great pride in our uncompromising attention to customer service, workmanship and design. Trevalli doesn't just build homes, we enhance lifestyles - turning your dreams into reality.

Whatever your lifestyle needs - the choice is yours with Trevalli.

519-515-0454

www.trevallihomes.com

PO Box #21009, 35 Harvard Road, Guelph, ON N1G 3A0

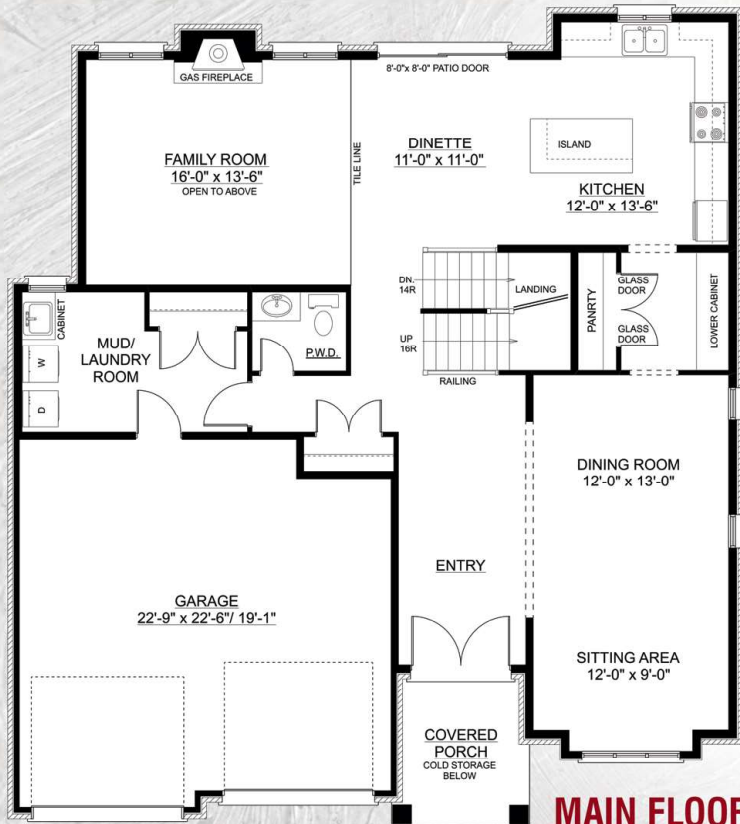


Built BY CRAFTSMEN
DESIGNED FOR YOUR *Lifestyle*



Chartwell

2930 sq ft
(Plus 240 Sq. Ft. of "open to below")



*Houses Shown With Premium Features

(Plus 240 Sq. Ft. of "open to below")

The Choice is yours with



*Materials, specifications, and floor plans are subject to changes without notice. Plan may be built as the mirror image. All house renderings are artist's conceptions. All floor plans are approximate dimensions. Actual usable floor space may vary from the stated floor area E, & O.E. © 2018 Trevalli Homes Limited.



Flanders

3175 sq ft + 61 sq ft "open to below"



Our Commitment to Quality

Trevalli Homes is dedicated to providing superior-quality comfortable homes that focus on innovative design, excellence in workmanship and customer satisfaction - beyond expectations.

Built on strong family values, Trevalli builds your home as if it were our own. We take great pride in our uncompromising attention to customer service, workmanship and design. Trevalli doesn't just build homes, we enhance lifestyles - turning your dreams into reality. Whatever your lifestyle needs - the choice is yours with Trevalli.

519-515-0454

www.trevallihomes.com

PO Box #21009, 35 Harvard Road, Guelph, ON N1G 3A0



Built BY CRAFTSMEN
DESIGNED FOR YOUR *Lifestyle*





Hanlon

3290 sq ft + 415 sq ft "open to below"



Our Commitment to Quality

Trevalli Homes is dedicated to providing superior-quality comfortable homes that focus on innovative design, excellence in workmanship and customer satisfaction - beyond expectations.

Built on strong family values, Trevalli builds your home as if it were our own.

We take great pride in our uncompromising attention to customer service, workmanship and design. Trevalli doesn't just build homes, we enhance lifestyles - turning your dreams into reality.

Whatever your lifestyle needs - the choice is yours with Trevalli.



519-515-0454

www.trevallihomes.com

PO Box #21009, 35 Harvard Road, Guelph, ON N1G 3A0

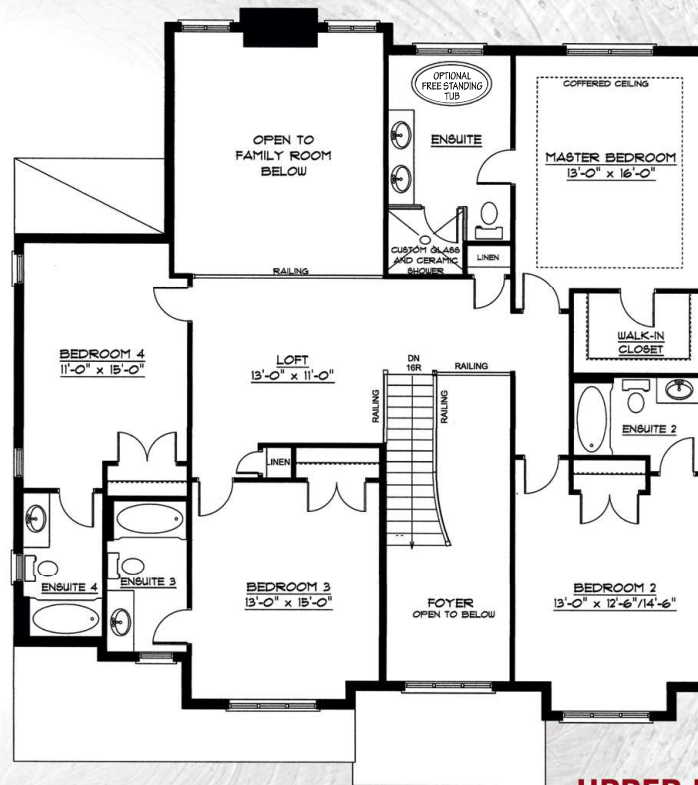
Built BY CRAFTSMEN
DESIGNED FOR YOUR Lifestyle



Hanlon

3290 sq ft
(Plus 415 Sq. Ft. of "open to below")

MAIN FLOOR
1695 sq ft



UPPER FLOOR
1595 sq ft
(Plus 415 Sq. Ft. of "open to below")

*Houses Shown With Premium Features

The Choice is yours with



*Materials, specifications, and floor plans are subject to changes without notice. Plan may be built as the mirror image. All house renderings are artist's conceptions. All floor plans are approximate dimensions. Actual usable floor space may vary from the stated floor area E, & O.E. © 2018 Trevalli Homes Limited.



Carnaby

3420 sq ft + 113 sq ft "open to below"



Our Commitment to Quality

Trevalli Homes is dedicated to providing superior-quality comfortable homes that focus on innovative design, excellence in workmanship and customer satisfaction - beyond expectations.

Built on strong family values, Trevalli builds your home as if it were our own. We take great pride in our uncompromising attention to customer service, workmanship and design. Trevalli doesn't just build homes, we enhance lifestyles - turning your dreams into reality. Whatever your lifestyle needs - the choice is yours with Trevalli.



519-515-0454

www.trevallihomes.com

PO Box #21009, 35 Harvard Road, Guelph, ON N1G 3A0

Built BY CRAFTSMEN
DESIGNED FOR YOUR *Lifestyle*

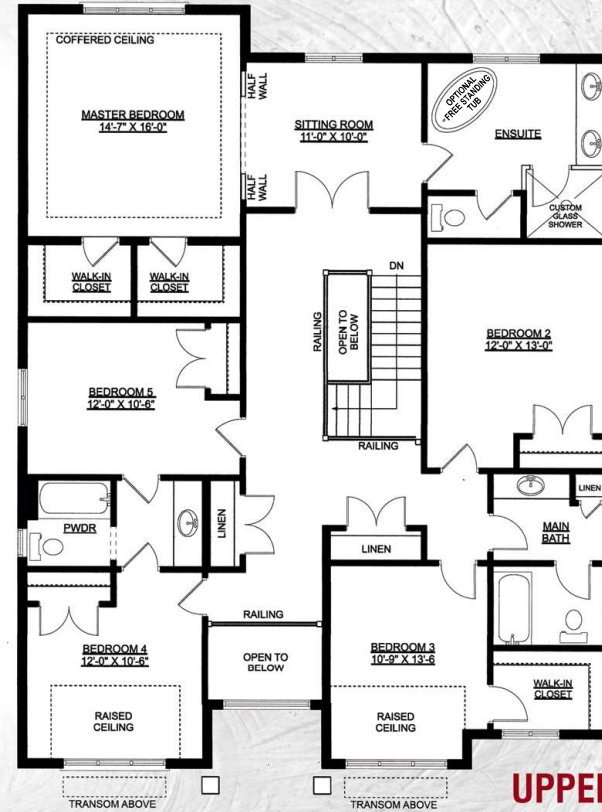


Carnaby

3420 sq ft
(Plus 113 Sq. Ft. of "open to below")



MAIN FLOOR
1560 sq ft



UPPER FLOOR
1860 sq ft
(Plus 113 Sq. Ft. of "open to below")

*Houses Shown With Premium Features

The Choice is yours with **TREVALLI**
Homes Limited

*Materials, specifications, and floor plans are subject to changes without notice. Plan may be built as the mirror image. All house renderings are artist's conceptions. All floor plans are approximate dimensions. Actual usable floor space may vary from the stated floor area E, & O.E. © 2018 Trevalli Homes Limited.