



# -Queens Lane-

TOWNHOMES

# BRANTHAVEN



**A REFINED  
TOWNHOME  
LIFESTYLE  
AWAITS**

LIVE THE LIFE™ YOU HAVE ALWAYS  
WANTED WITH BRANTHAVEN IN BRAMPTON.

Welcome to Queens Lane, an exclusive enclave of luxury townhomes nestled in a postcard-worthy setting of majestic trees, next door to a charming creek and embraced by boundless greenspaces. It's here you will discover a rare new home opportunity for carefree luxury townhome living available for the discerning few. Make your journey home to Queens Lane.



RAVINE

CON

DO

VE

NE

CE

LANE

# NATURAL

A NATURAL SANCTUARY NEXT DOOR.  
**READY TO BE DISCOVERED.**

Nestled in a private lane overlooking the treetops of Huttonville Creek, next door to Lionhead Golf and Country Club and opposite the meandering trails of the Estates of Credit Ridge, Queens Lane's location offers so much to see and explore.



**-Queens Lane-**  
TOWNHOMES



Arthur Warner Pond



Heart Lake & El Dorado Conservation Areas



The Estates Of Credit Ridge Trails



Lionhead Golf & Country Club

QUEENS LANE - A WARM

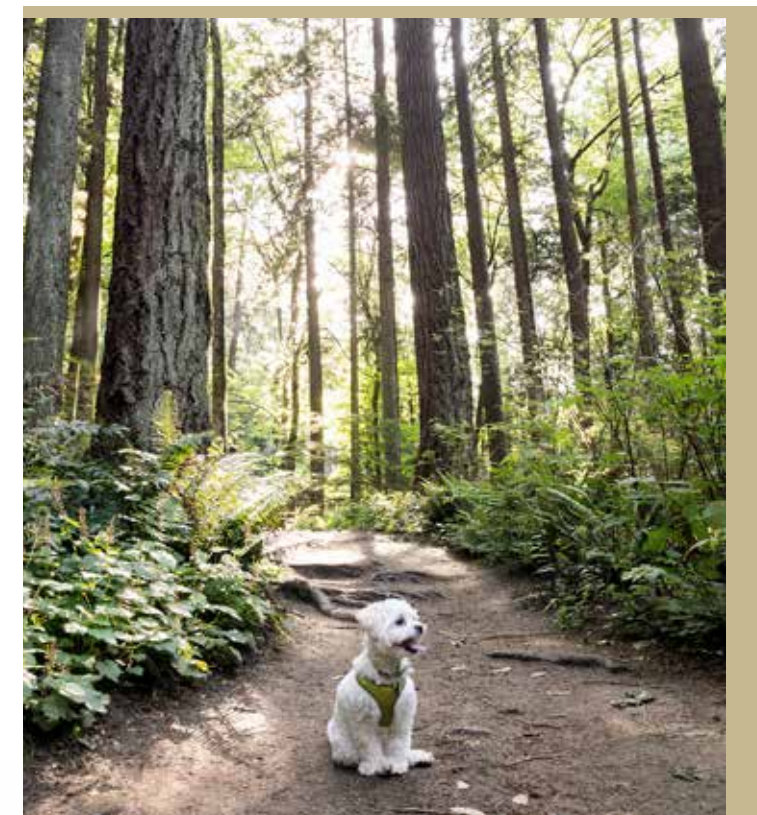
# WELCOME



**EMBRACE TODAY'S MODERN LIFESTYLE.**  
QUEENS LANE IS THE PERFECT BLEND OF TIMELESS ARCHITECTURE AND THOUGHTFULLY MODERN INTERIORS-DESIGNED WITH YOU IN MIND.

Arrive in style. Queens Lane's custom-inspired streetscape and bespoke architectural style have been thoughtfully curated for its one-of-a-kind setting. A stately entry feature, stone pillars and decorative ironwork frame the secluded enclave entrance and define this special place you'll love to come home to.

# PRIVATE SETTINGS



## A CURATED CUL-DE-SAC.

Stroll down Queens Lane and you'll find a quaint, private parkette at the natural cul-de-sac. A fully landscaped area surrounded by greenspaces, Queens Lanes' parkette overlooks a preserved woodlot adjacent to the Credit River, Huttonville Creek and the treetop canopy of Lionhead Golf Course beyond. This is the perfect spot to relax anytime of the day on a quiet bench, under the pergola or wandering the landscaped paths.

# THE CHOICE IS YOURS

## 3-STOREY LUXURY TOWNHOMES

- PICK YOUR PLAN
- SELECT YOUR STREETSCAPE STYLE
- CHOOSE YOUR LANE LOCATION

THERE ARE PLENTY OF OPTIONS TO CHOOSE HOW AND WHERE YOU WANT TO LIVE AT QUEENS LANE.

Pick from one of Queens Lane's four distinctive town home plans to suit your lifestyle needs. Then make a selection from the two elevation styles offered. Next, choose your location on the lane. Each Queens Lane block collection has been carefully considered for a custom look and sited to take advantage of its one-of-a-kind setting. Queens Lane is truly designed to be yours.



Whether you choose the Devon, Oxford, Somerset or Essex plan, you'll enjoy the pleasing Crown Collection elevation with its handsome brick and stone, beautiful box bay windows, maintenance-free cedar profile shakes and tone-on-tone materiality making this a stately streetscape.

 **THE CROWN**  
COLLECTION

The Kingsway Collection makes a great impression with attractive, authentic and crafted materiality for enhanced curb appeal. The rhythm of rustic stone and textured shakes makes this a vibrant and robust façade within the Queens Lane enclave.

 **THE KINGSWAY**  
COLLECTION



THIS IS  
**INSPIRED  
LIVING**



GATHER AROUND.  
MAKE MEMORIES.  
**LIVE LIFE WELL,  
INSIDE & OUT.**

# DESIGNED

**WELL-CRAFTED INTERIORS.** AWARD-WINNING DESIGNS.

Branthaven interiors are inspired layouts for real life. Our bright, open concept living spaces are the perfect blend of modern style and flexibility and essential to good living.





K

S



**EMBRACE MODERN, FORMAL  
AND CASUAL FAMILY LIFE.**

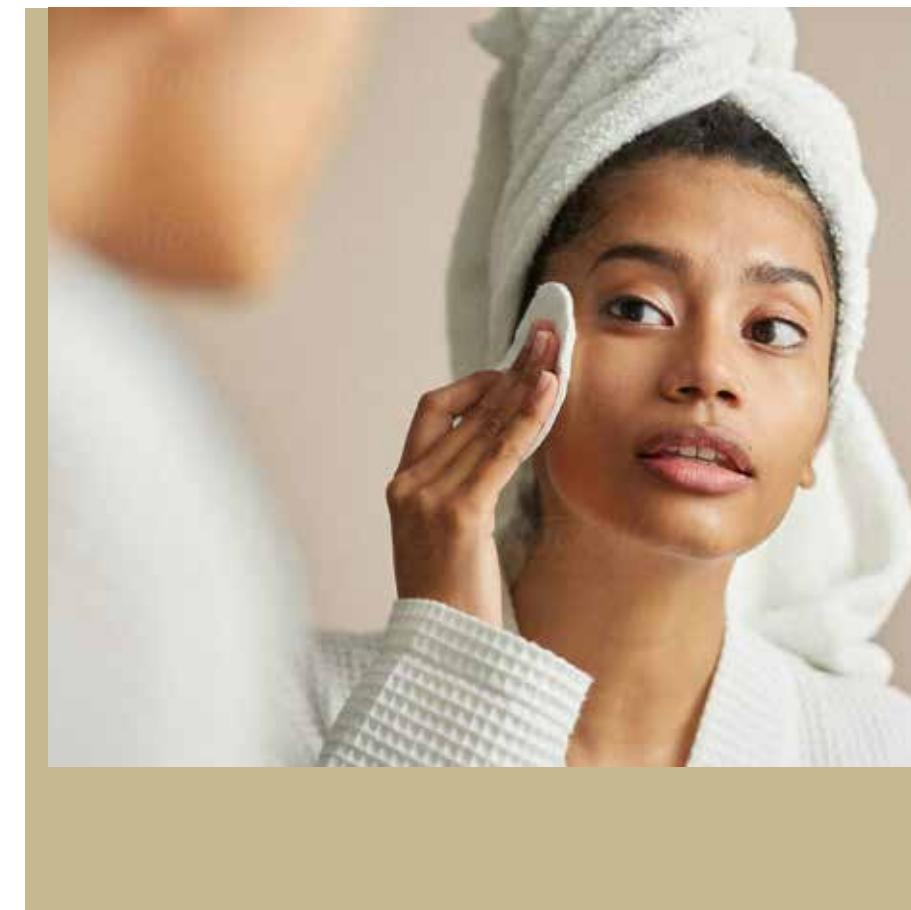
Open concept kitchen and dining spaces provide our homeowners with an infinitely better lifestyle to enjoy every day and appreciate while entertaining family and friends.

# CONNECTED



SEAMLESS INDOOR OUTDOOR  
**PRIVATE TERRACE CONNECTIONS.**

Day or night, for a welcome breath of fresh air, step out and enjoy the full width, private outdoor living space. There's plenty of room for relaxing, entertaining, BBQing or brunch. You'll discover the serenity of living well next door to nature with stunning forested ravine views from your picturesque perch.



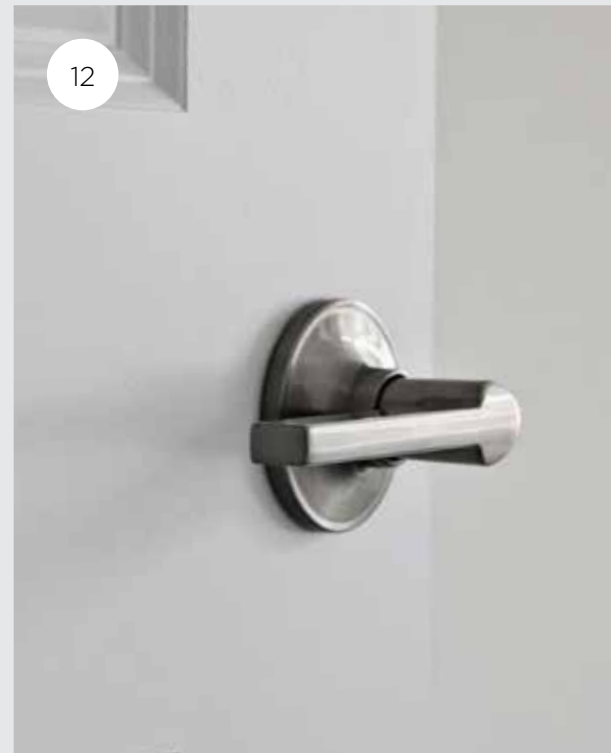
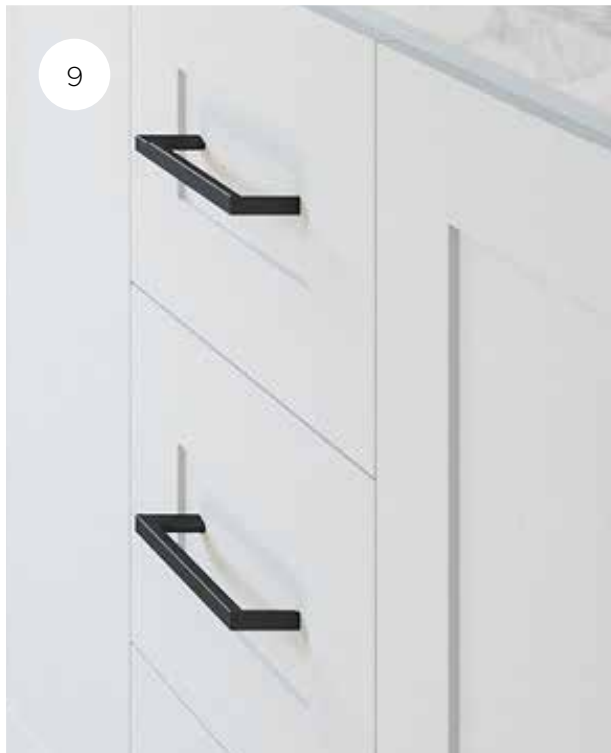
**LUXURIOUS  
SPA-INSPIRED  
BATHROOMS ARE  
BATHED IN LIGHT.**

Principal ensuites are stylishly appointed with luxe spa looks and functionality. Delight in the workmanship of the furniture-style vanity with quartz countertops, undermount sinks and plenty of drawers and counter storage for everyday essentials. Relax and let the day disappear while soaking in the freestanding tub.

PAMPFERED

BRANTHAVEN

# FRESH THINKING™



NEW. NOW. FRESH.  
BUILT-IN STANDARDS  
AT NO EXTRA COST.  
**INCLUDING BH HOME  
TECHNOLOGY™.**



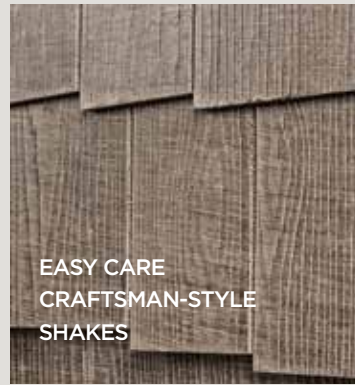
- 1. High arc modern kitchen faucets
- 2. Premium Blanco undermount stainless steel sink
- 3. Extra deep pot drawers
- 4. Durable modern pre-finished oak engineered hardwood
- 5. Solid oak stairs and railings
- 6. Quartz bathroom countertops with undermount sinks
- 7. Solid surface kitchen countertops
- 8. Single lever bathroom faucets
- 9. Furniture-style vanity cabinets
- 10. Handy USB charging port
- 11. Brilliant lighting
- 12. Satin nickel door hardware
- 13. Chrome towel holders
- 14. Smart shower caddy
- 15. Stand alone shower with acrylic base & sliding glass door

- BH HOME TECHNOLOGY™**
- 16. Google Nest Thermostat™
  - 17. Google Nest Hello Video Doorbell™
  - 18. Google Nest Mini Speaker™

# BRANTHAVEN ORIGINALS™

"THE BEST BUILT HOME AT ANY PRICE"

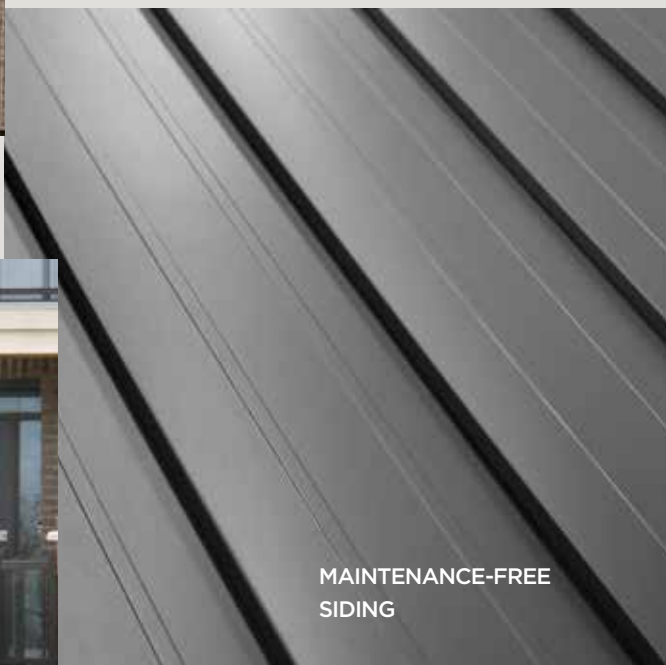
Every Branthaven home has been constructed with unique built-in features that you would only expect from a master builder. We call them Branthaven Originals™ – our signature built-in features that we stand by whether you are buying a townhome or detached single-family home. From upgraded exteriors, thoughtful finishes and custom crafted construction, you'll notice Branthaven's commitment to quality in every detail of your new home. Here's your inspired material toneboard.



EASY CARE CRAFTSMAN-STYLE SHAKES



HIGH PERFORMANCE HIGH STYLE BLACK WINDOWS



MAINTENANCE-FREE SIDING



STONE SKIRTING AND ACCENT WALLS



ALL CLAY BRICK IN RICH TONES



## SIGNATURE EXTERIORS

Exteriors are handsomely clad in architecturally authentic materials – from clay brick, rustic stone, textured vinyl shakes or modern board and batten for instantly discernible architectural style and great curb appeal.



## OUR WINDOWS SAY IT ALL

Our high performance, double pane, casement style vinyl framed windows are larger, bolder and more distinctive than our competitors. They define our architectural styles and their low-E coating provides additional insulation and warm and inviting interiors.



## ENHANCED LANDSCAPING

Nothing says curb appeal and instant maturity like a front entry with Branthaven signature welcoming shrubbery, decorative slab walkways and two coats of asphalt to your driveway.



## TWICE AS NICE - CORNER ELEVATIONS

We design our corner elevations specifically for each community. From wrap around porches, enhanced windows, rear or side garages they are designed to appeal from whatever angle you approach.



## DRIVE-IN GARAGE

The inside of our garages – walls and ceilings – are drywalled, taped, (two coats) and freshly painted! Garage window lites add even more light.



## WRAPPED IN COMFORT

Branthaven homes have R-22 exterior wall and full height R-20 basement insulation for better comfort and energy savings.



## RAIN GEAR SUPPLIED

The secure drainage membrane that surrounds your foundation will ensure your home is dry and comfortable.



## SUB FLOORS ABOVE AVERAGE

Soundly built – Branthaven's floor sheathing is not only nailed, but glued, and screwed to minimize floor squeaking.



## BREATHE BETTER

HRV – or Heat Recovery Ventilator filters fresh air into your home and removes stale, polluted air and allergens for a healthy home.



## HOT WATER ON DEMAND

Never worry about hot water again! Family-friendly, endless hot water supply and energy efficient tankless hot water heater.



## LARGER CASINGS AND BASEBOARDS

With glossy and larger than average casings and baseboards, rooms appear stately and stylish.

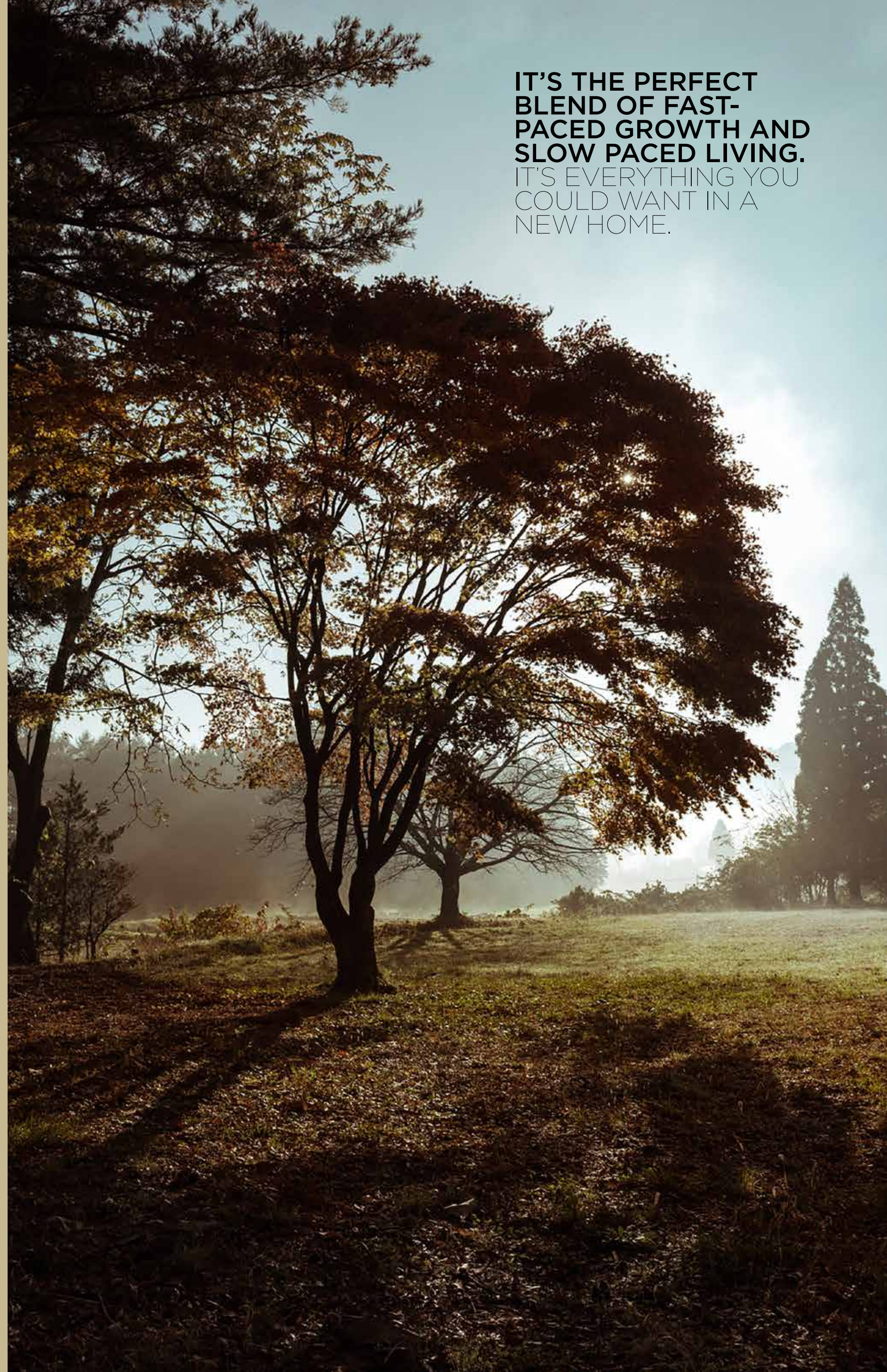


## DÉCOR GALORE

Branthaven's selections are renowned. Choose from a wide selection of design-forward features and finishes at our Home Design Centre™.



EXPERIENCE  
THE **NEW**  
**BRAMPTON**



IT'S THE PERFECT  
BLEND OF FAST-  
PACED GROWTH AND  
SLOW PACED LIVING.  
IT'S EVERYTHING YOU  
COULD WANT IN A  
NEW HOME.

# DISCOVER

## BRAMPTON

The Peel Art Gallery, Museum & Archives (PAMA)



Main Street's Boutique Shops

Thomas Fuller's 1889 Dominion Building



Discover "Flowertown" Brampton



Shop Nearby  
Credit Ridge Crossing

### DISCOVER BRAMPTON'S THRIVING LIFESTYLE AND RICH HERITAGE.

Queens Lane is located minutes from all the urban amenities and modern conveniences you could desire. Celebrate historic "Flowertown" and Brampton's storied past, its charming Main Street and lively town centre brimming with colourful and cosmopolitan culture, a thriving arts scene. Be part of the revitalization of this Olde Ontario town.



**-Queens Lane-**  
TOWNHOMES

Brampton's Premier Shopping Centre - Bramalea City Centre



Cafes & Bistros



All Roads Lead to Brampton

Eat, drink and enjoy fresh food and global flavours

## COMMUTE

Everyday commuting is a breeze with quick connections to all 400 Series highway access just minutes away. There's a handy ZUM Transit stop next door connecting you to the GO Station and downtown's work and nightlife.



MINUTES  
FROM HWY 407,  
410, 401

## ALL-ROUND CONVENIENCE. BRAMPTON OFFERS IT ALL.

Queens Lane's location brings it all together. From everyday essentials, excellent schools, state-of-the-art recreation facilities, family-friendly services and Brampton's prestigious corporate campuses and pharma headquarters - everything's moments away and easily accessible.

## CONNECT

Relax after work at Queens Lane's own private parkette. Walk the dog or sit awhile at the adjacent Arthur Warner Pond or stroll the many nearby trails of Credit Ridge. El Dorado Park's Conservation Area is spectacular every season.



WALKING  
DISTANCE TO  
PLAYGROUNDS,  
FIELDS + TRAILS



WALK  
TO NEARBY  
NEIGHBOURHOOD  
SHOPPING

## CONVENIENCE

Credit Ridge Crossing offers everyday essentials from groceries, coffee shops, pharmacy and more. Plus, nearby specialty groceries and indie shops offer renowned food markets, tasty spice stalls and fresh flowers.



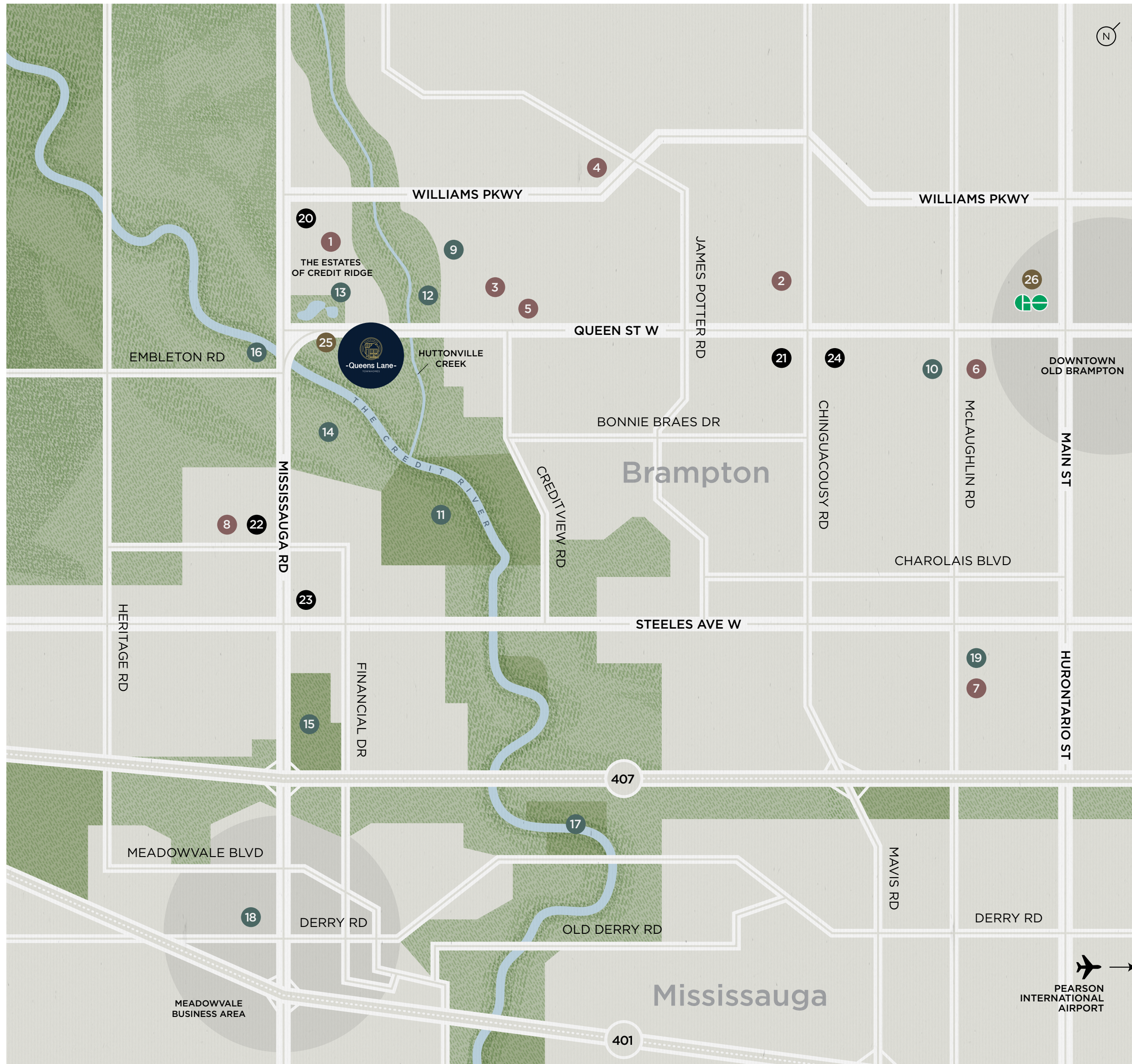
## CULTURE

Weekends are made for fun. Grab dinner or brunch downtown. Take in a gallery exhibit or live entertainment at the Rose Theatre. Everything's located on Main Street's Culture Corridor.

# CONVENIENCE



# AMAZING LOCAL AMENITIES NEXT DOOR TO IT ALL



## SCHOOLS/DAYCARE/LIBRARIES

1. Ingleborough Public School
2. David Suzuki Secondary School
3. St. Jacinta Marto Catholic Elementary
4. St. Roch Catholic Secondary School
5. Lullaboo Nursery & Childcare Centre
6. Sheridan College Davis Campus
7. Brampton Library - South Fletcher's Branch
8. Brampton Library - South West Branch

## RECREATION

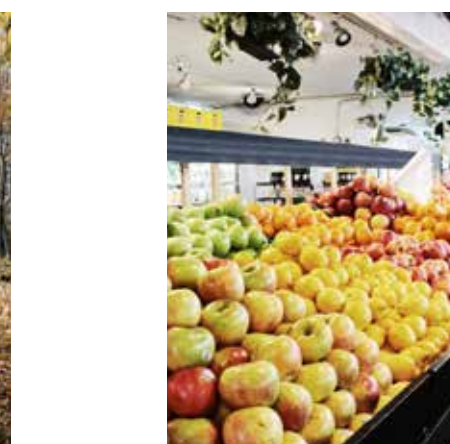
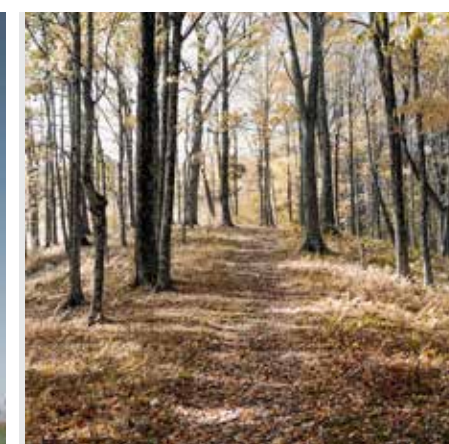
9. Brampton Ingleborough YMCA
10. Flower City Community Campus
11. El Dorado Park
12. Credit Ridge Trail System
13. Arthur Warner Pond
14. Lionhead Golf & Country Club
15. Streetsville Glen Golf Club
16. Historic Hamlet of Huttonville
17. Meadowvale Conservation Area
18. Meadowvale Sports Park
19. South Fletcher's Sportsplex

## SHOPPING

20. Credit Ridge Commons
21. Chinguacousy Marketplace
22. Chalo Fresh Co
23. Apna Farm Halal Grocery
24. Sobeys

## TRANSIT

25. ZUM Transit
26. GO Train / Brampton Station



# BH

50 YEARS  
OF HOMEBUILDING EXCELLENCE

## LIVE THE LIFE™

Branthaven has made its mark in the homebuilding industry with our own brand of design-forward developments. From our inception as a master builder of one-of-a-kind estate homes, Branthaven has developed and delivered a broad portfolio of quality single-family homes, classic and contemporary townhomes, boutique condos and luxury rental residences. Along the way we have earned our reputation as an award-winning, respected brand and a sought-after home builder across Southern Ontario.

Branthaven's commitment to innovate and improve every detail in home design and the building process ultimately shapes the way our homeowners can live life through better living spaces. We are constantly re-imagining today's homes with our life-centric interiors and design-savvy Fresh Thinking™ features. The pillars of our brand - Quality, Value, Integrity and Pride are the very foundation of our customer experience and our industry-wide reputation for homebuilding excellence.

Branthaven is delighted to be bringing our brand of attainable luxury townhome living to Brampton in 2021. With Queens Lane, discerning new home buyers will have the opportunity to discover our design forward plans, high quality construction and discernibly different standards - all in a one-of-a-kind setting.

2021 is Branthaven's milestone 50th year, we will continue to bring exceptional talent, leadership and dedication to every community and provide our homebuyers with "The Best Built Home At Any Price".

Steve Stipsits / Branthaven



BRANTHAVEN



# BRANTHAVEN

BH



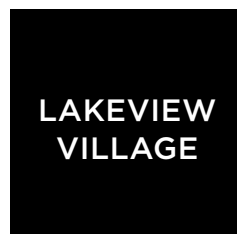
OAKVILLE



BURLINGTON



MISSISSAUGA



VISIT  
**BRANTHAVEN.COM**  
TO LEARN MORE  
TODAY.

All renderings are artist's concept. Prices, sizes and specifications are subject to change without notice. E&O.E.